

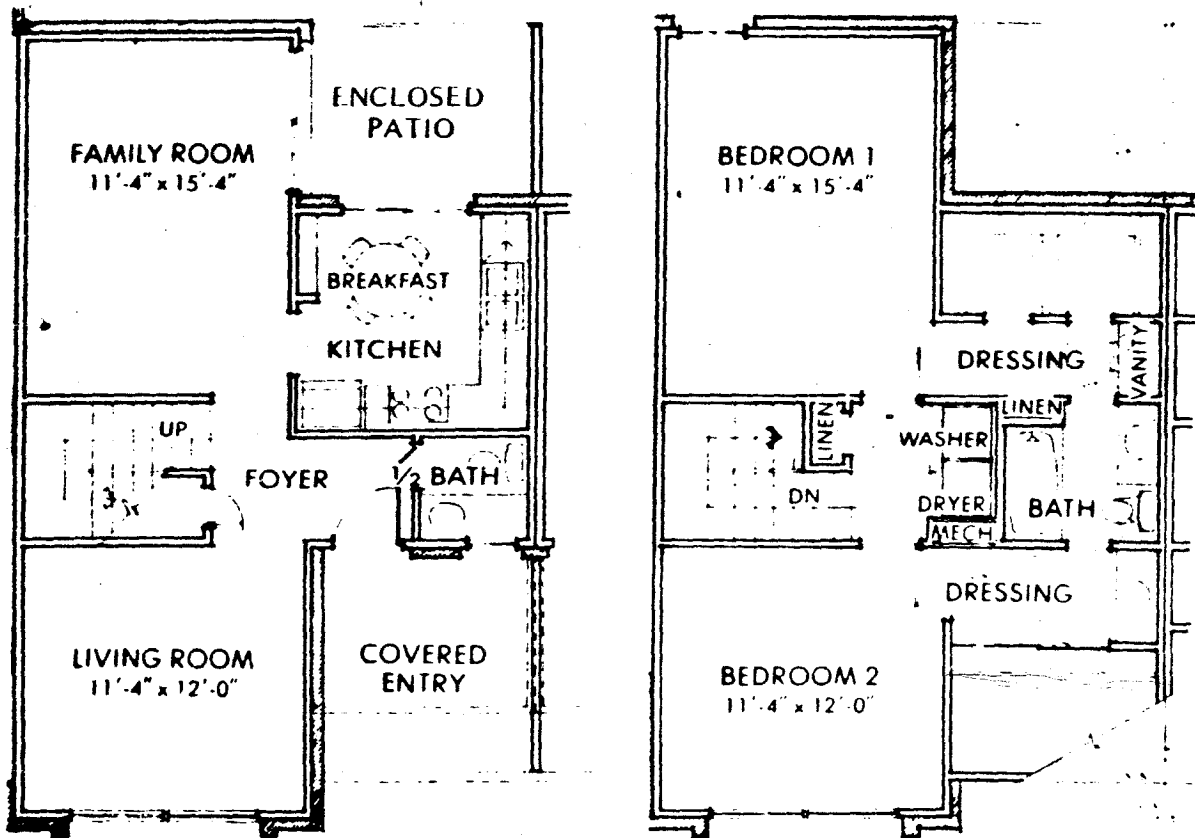
PLAN - A

Skyway

2 Bedrooms — 1½ Baths — Living Room — Den



The Skyway offers a formal living room as well as a family room and a half bath downstairs. Upstairs, two bedrooms and a bath are highlighted by twin dressing areas and double walk-in closets. Washer-Dryer connections are also conveniently located upstairs. The full kitchen has General Electric Appliances — range, refrigerator, dishwasher, disposal — and a convenient pantry. Each unit has its own individual heating and cooling system.



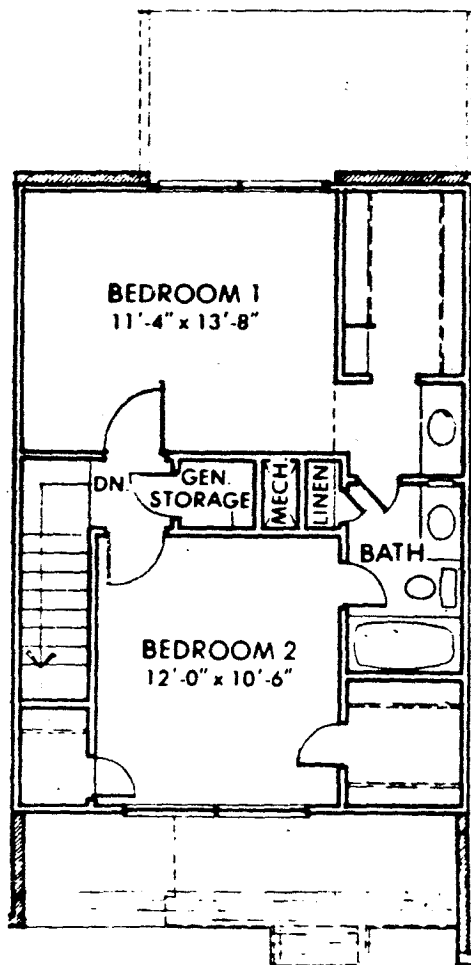
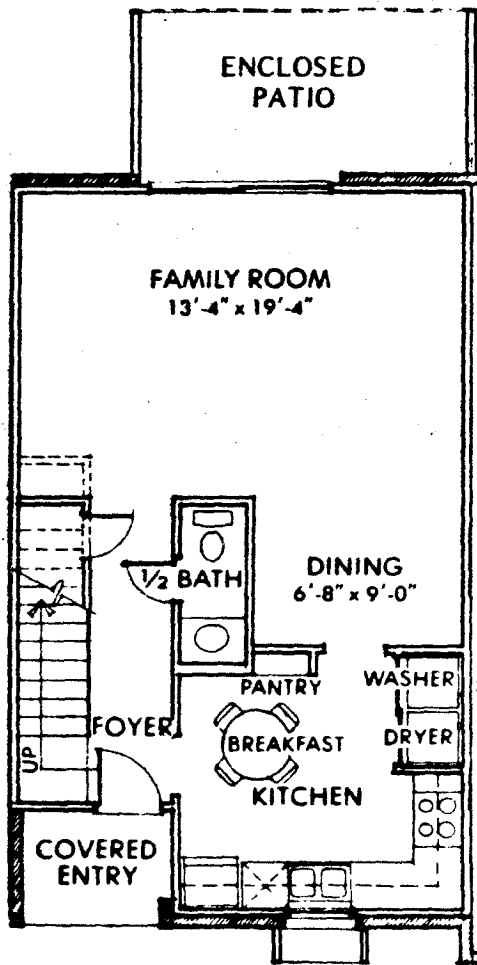
PLAN - B

Cloudwisp

2 Bedrooms — 1½ Baths — Living/Den



A huge living area overlooking the patio is the focus of the Cloudwisp plan. The large kitchen is complete with General Electric Appliances — range, refrigerator, washer-dryer connections, dishwasher and disposal, and a convenient pantry. There are two bedrooms upstairs, both adjoining the bath, and both with walk-in closets. Each unit has its own individual heating and cooling system.

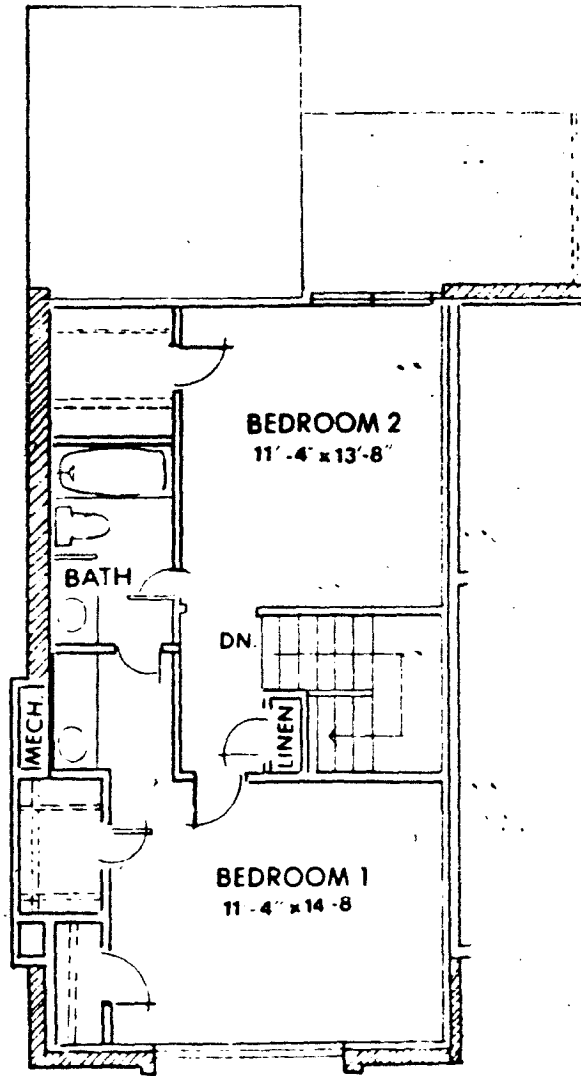
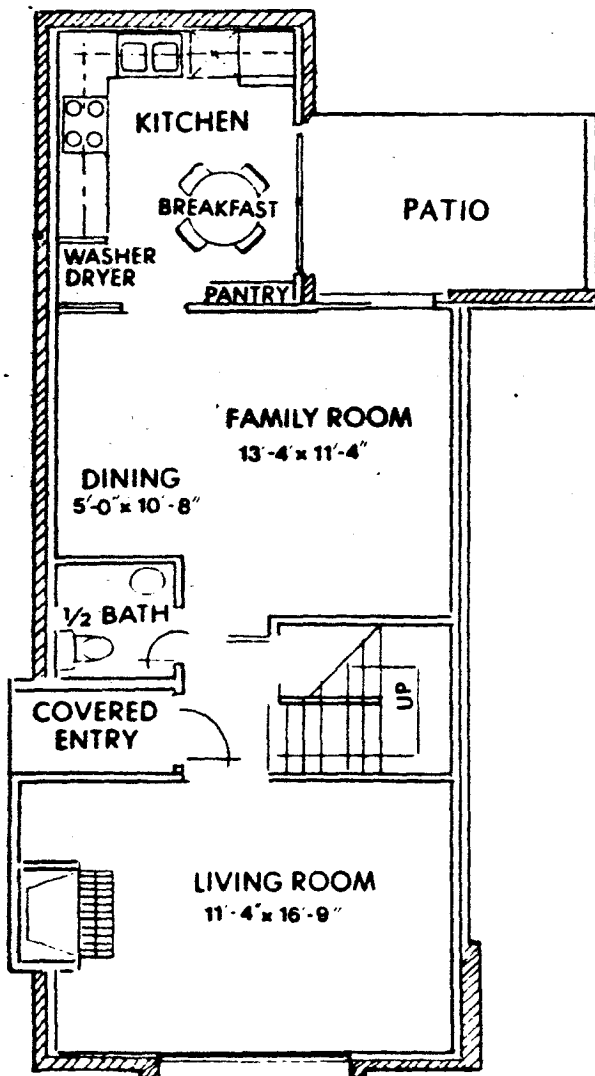


Sunshine

2 Bedrooms — 1½ Baths — Living Room — Den



Glass doors opening onto the patio from both the family room and the kitchen make this plan true to its name. The Sunshine has two bedrooms upstairs, two large walk-in closets and a dressing area. The kitchen has General Electric Appliances — range, refrigerator, dishwasher, disposal — and a convenient pantry. Each unit has its own individual heating and cooling system. A woodburning fireplace is an optional feature.

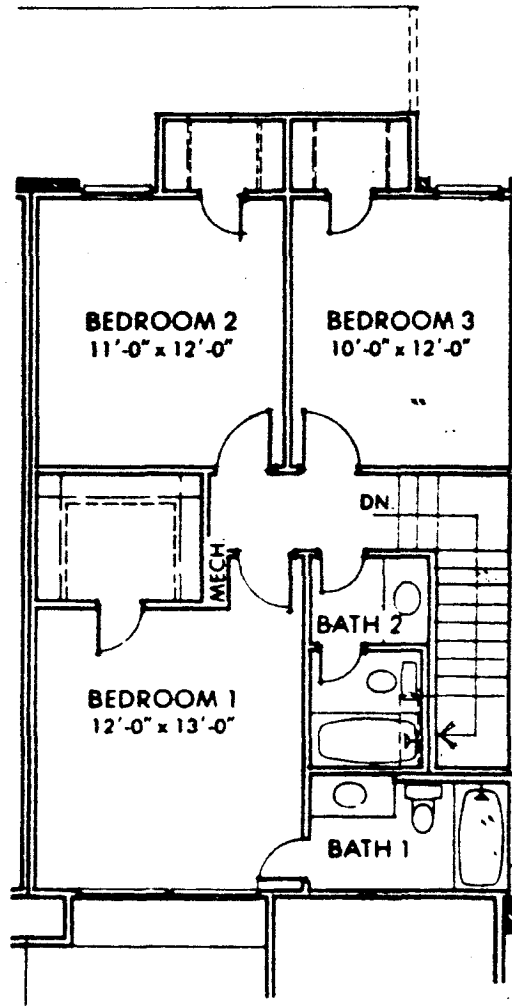
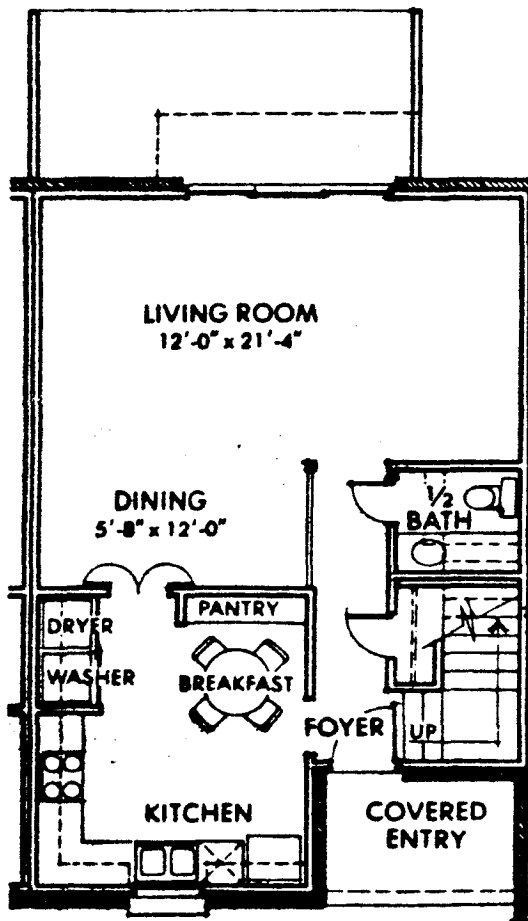


Rainbow

3 Bedrooms — 2½ Baths — Living/Den



The Rainbow provides a large living area and adjoining dining room enhanced by triple-width glass doors overlooking the patio. The large country kitchen is complete with General Electric Appliances — range, refrigerator, washer-dryer connections, dishwasher, disposal and large convenient pantry. Upstairs, there are three bedrooms and two full baths. The Master bedroom has its own walk-in closet for total convenience. Each unit has its own individual heating and cooling system.



Wonderwind

3 Bedrooms — 2 Bath — Living/Den



A huge vaulted ceiling in the living area and a master bedroom suite downstairs add elegance to the Wonderwind. Glass doors opening onto the patio from both living room and kitchen create a light and breezy atmosphere. There are two bedrooms and a bath upstairs with twin walk-in closets. Washer-dryer connections are conveniently located on the second level. Each unit has its own individual heating and cooling system. A woodburning fireplace is an optional feature.

