

FIELD NOTES.

Being a tract or part of land situated in the City of Richardson, Dallas County, Texas, and being the Village North Addition, an addition to the City of Richardson as recorded in the Plan and Deed Records of Dallas County, Texas, and being more particularly described as follows:

BEGINNING at a point for corner at the intersection of the easterly line of Trellis Place and the southerly line of Left Line Road;

THENCE North 89° 51' East along the southerly line of Left Line Road a distance of 392.02 feet to a point for corner at the most northerly, northeasterly corner of said addition;

THENCE South 0° 02' 40" East along the easterly line of said addition a distance of 467.55 feet to a point for corner;

THENCE North 89° 51' East along the northerly line of said addition a distance of 317.95 feet to a point for corner in the westerly line of Jupiter Road;

THENCE South 0° 02' 40" East along the westerly line of Jupiter Road a distance of 311.62 feet to a point for corner at the intersection of the westerly line of Jupiter Road and the northerly line of Trellis Place;


THENCE North 31° 41' 20" West along the northerly line of Trellis Place a distance of 819.94 feet to the beginning of a curve to the right;

THENCE in a westerly, northwesterly and northerly direction along the northerly, northeasterly and easterly line of Trellis Place and along said curve to the right having a radius of 25.00 feet, a central angle of 90° 00', an arc length of 39.27 feet to the end of said curve to the right;

THENCE North 0° 16' 30" East along the easterly line of Trellis Place a distance of 747.40 feet to the place of beginning and containing 10.193 acres.

SURVEYOR'S CERTIFICATION:

I hereby certify that this true and accurate survey, made under my supervision on January 15, 1972, correctly shows the relation of the buildings and other structures to the property lines of land indicated herein, and that there are no encroachments or overlaps or to ad joining property of property covered by this survey, or of buildings or structures located on said land, nor encroachments of adjoining buildings or structures on said land, except as shown, noted or used to locate the survey. This survey is subject to any unrecorded easements not visible on the ground.

Raymond L. Goodson, Jr.


COUNTY CLERK'S OFFICE
RECORDS OF THIS COUNTY MAY BE VIEWED AT THIS OFFICE

**EXHIBIT "B" TO DECLARATION & MASTER DEED
OF THE RICHARDSON LIFESTYLE CONDOMINIUM**

RICHARDSON LIFESTYLE CONDOMINIUM
SUBDIVISION PLAN
VILLAGE NORTH ADDITION
CITY OF RICHARDSON DALLAS COUNTY, TEXAS
BY
RAYMOND L. GOODSON JR., INC., ENGINEERS
2900 LEMMON AVE. DALLAS, TEXAS
JANUARY, 1972 SCALE AS SHOWN

11111
11111
11111

EXHIBIT "B"

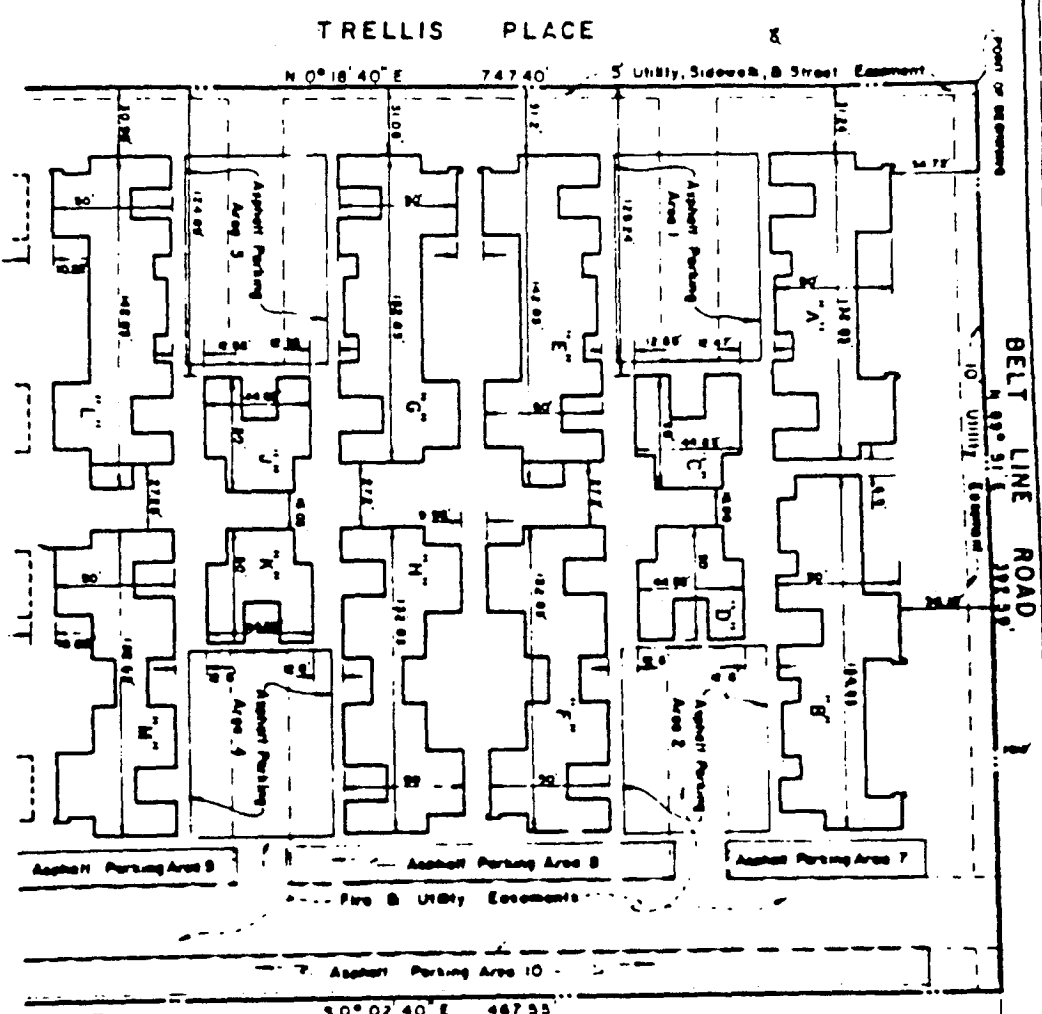


EXHIBIT "B-1"

RAYMOND L. GOODSON JR. INC., ENGINEERS
 2909 LEMMON AVE
 DALLAS, TEXAS
 JANUARY, 1972
 SCALE 1"=60'

RICHARDSON LIFESTYLE
CONDOMINIUM
 SUBDIVISION PLAN
 VILLAGE NORTH ADDITION
 CITY OF RICHARDSON
 DALLAS COUNTY, TEXAS

GENERAL NOTES

- 1 All Building Area Lettered in Series from "A" to "Z" (Excluding Letter "I") and "AA" to "ZZ" (Excluding Letter "II")
- 2 The Parking Spaces Shown Herein Are a Part of the Limited Common Elements but are Restricted to the Use and Enjoyment of the Apartment to Which They Are Assigned
- 3 Building "T" (Reference Blg.) is a Part of the Owner's Common Elements

72201 2100

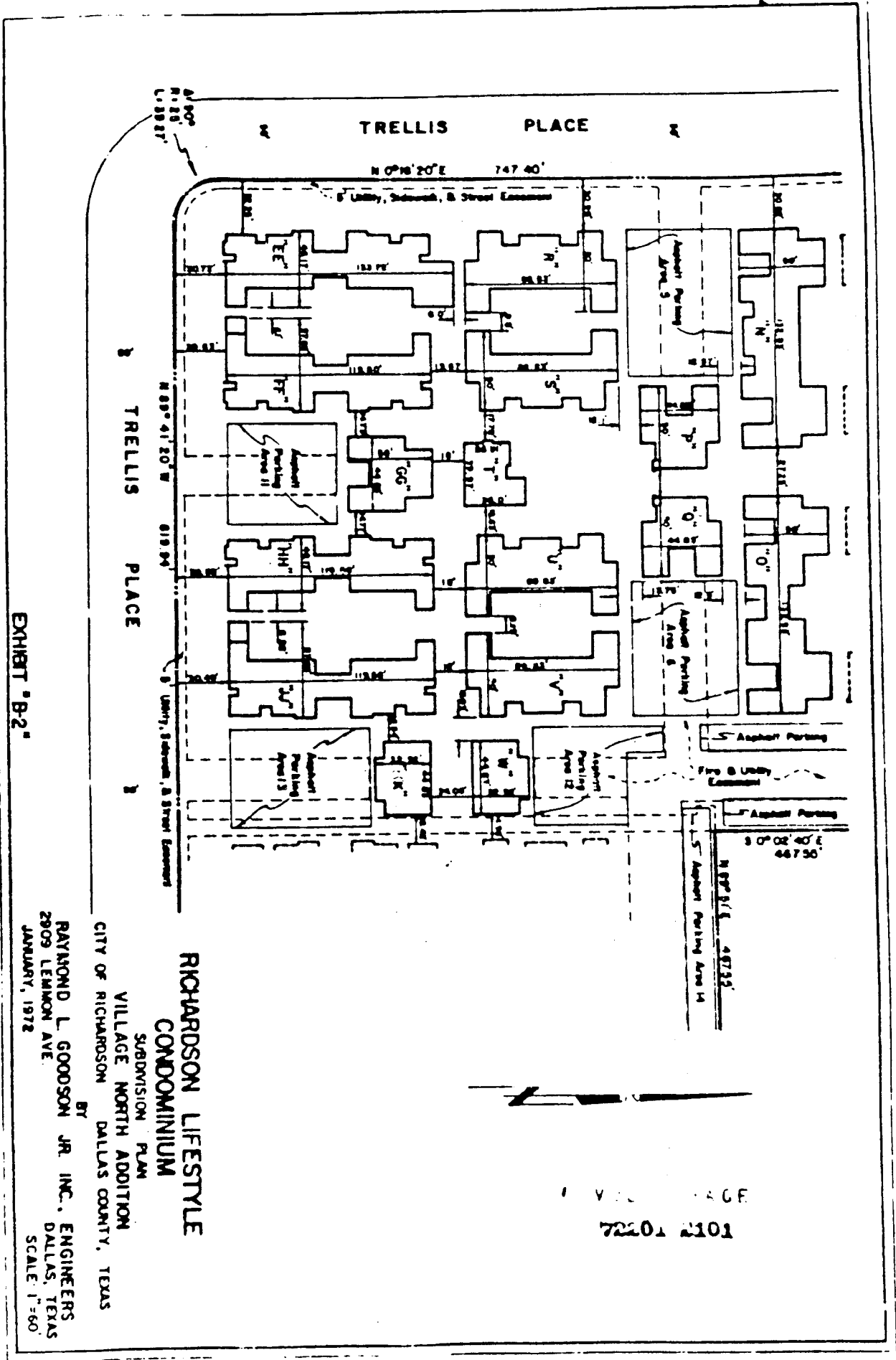


EXHIBIT "B-2"

**RICHARDSON LIFESTYLE
CONDOMINIUM**
SUBDIVISION PLAN
VILLAGE NORTH ADDITION
CITY OF RICHARDSON DALLAS COUNTY, TEXAS

BY
RAYMOND L. GOODSON JR. INC., ENGINEERS
2809 LEMMON AVE. DALLAS, TEXAS
JANUARY, 1972 SCALE: 1"=60'

VILLAGE
72201 2101

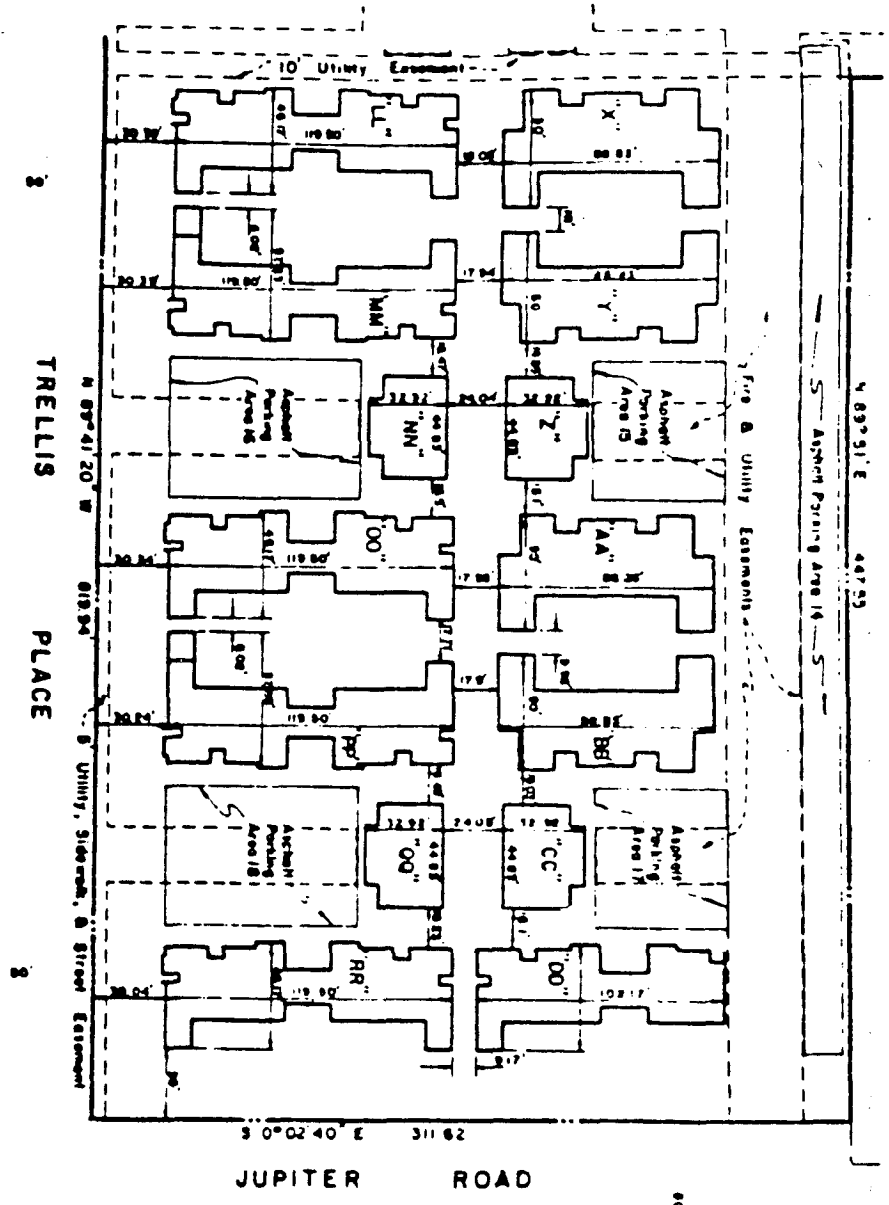


EXHIBIT "B-5"

RICHARDSON LIFESTYLE
 CONDOMINIUM
 SUBDIVISION PLAN
 VILLAGE NORTH ADDITION
 CITY OF RICHARDSON DALLAS COUNTY, TEXAS
 BY
 RAYMOND L. GOOSSON JR. INC., ENGINEERS
 DALLAS, TEXAS
 2809 LEMMON AVE
 JANUARY, 1972
 SCALE: 1"=60'

722101 2102

FIELD NOTES

Being a tract or parcel of land situated in the City of Richardson, Dallas County, Texas; and being the Village North Addition, an addition to the City of Richardson as recorded in the Map and Deed Records of Dallas County, Texas; and being more particularly described as follows:

BEGINNING at a point for corner at the intersection of the easterly line of Trellis Place and the southerly line of Belt Line Road;

THENCE North 89° 51' East along the southerly line of Belt Line Road a distance of 392.59 feet to a point for corner at the most northerly northeasterly corner of said addition;

THENCE South 0° 02' 40" East along the easterly line of said addition a distance of 467.55 feet to a point for corner;

THENCE North 39° 51' East along the northerly line of said addition a distance of 447.55 feet to a point for corner in the westerly line of Jupiter Road;

THENCE South 0° 02' 40" East along the westerly line of Jupiter Road a distance of 311.62 feet to a point for corner at the intersection of the westerly line of Jupiter Road and the northerly line of Trellis Place;

THENCE North 39° 41' 20" West along the northerly line of Trellis Place a distance of 819.94 feet to the beginning of a curve to the right;

THENCE in a westerly, northwesterly and northerly direction along the northerly, northeasterly and easterly line of Trellis Place and along said curve to the right having a radius of 25.06 feet, a central angle of 96° 00', an arc length of 39.27 feet to the end of said curve to the right;

THENCE North 0° 16' 40" East along the easterly line of Trellis Place a distance of 747.40 feet to the place of beginning and containing 10.193 acres.

SURVEYOR'S CERTIFICATION

I hereby certify that this true and accurate survey made under my supervision on January 11, 1972, correctly shows the relation of the buildings and other structures to the property lines of land indicated hereon, and that there are no encroachments or overlaps onto adjoining property of property covered by this survey or of buildings or structures located on said land, nor encroachments of adjoining buildings or structures on said land, except as shown, noted or described on the survey. This survey is subject to any unrecorded easements not visible on the ground.

Raymond L. Goodson, Jr.
SURVEYOR



COUNTY CLERK'S MEMO:
PORTIONS OF THIS
DOCUMENT NOT
REPRODUCIBLE
WHEN RECORDED

**EXHIBIT "B" TO DECLARATION & MASTER DEED
OF THE RICHARDSON LIFESTYLE CONDOMINIUM**

RICHARDSON LIFESTYLE CONDOMINIUM

SUBDIVISION PLAN

VILLAGE NORTH ADDITION

CITY OF RICHARDSON DALLAS COUNTY, TEXAS

BY

RAYMOND L. GOODSON JR., INC., ENGINEERS
2909 LEMMON AVE. DALLAS, TEXAS
JANUARY, 1972 SCALE AS SHOWN

VOL. PAGE
72201 2098

EXHIBIT "B"

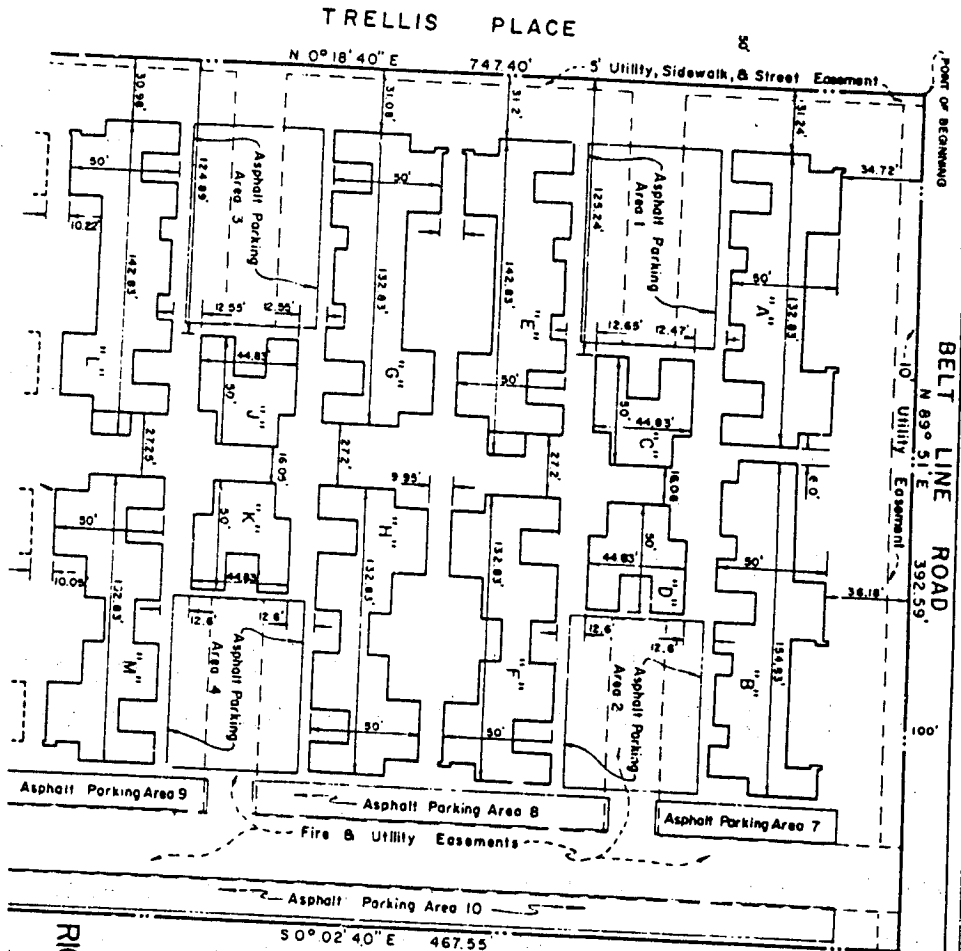


EXHIBIT "B-1"

RAYMOND L. GOODSON JR. INC., ENGINEERS
 2909 LEMMON AVE.
 DALLAS, TEXAS
 JANUARY, 1972

CITY OF RICHARDSON
 DALLAS COUNTY, TEXAS

**RICHARDSON LIFESTYLE
 CONDOMINIUM**

SUBDIVISION PLAN

VILLAGE NORTH ADDITION

BY

RAYMOND L. GOODSON JR. INC., ENGINEERS

2909 LEMMON AVE. DALLAS, TEXAS

SCALE: 1"=80'

GENERAL NOTES

1. All Buildings Are Lettered in Series from "A" to "Z" (Excluding Letter "I") and "AA" to "AZ" (Excluding Letter "I").
2. The Parking Spaces Shown Herein Are A Part Of The Limited Common Elements But Are Assigned To The Use And Enjoyment Of The Apartment To Which They Are Assigned.
3. Building "F" (Recreation Bldg.) Is A Part Of The General Common Elements.

VOLUME PAGE
 72201 2100

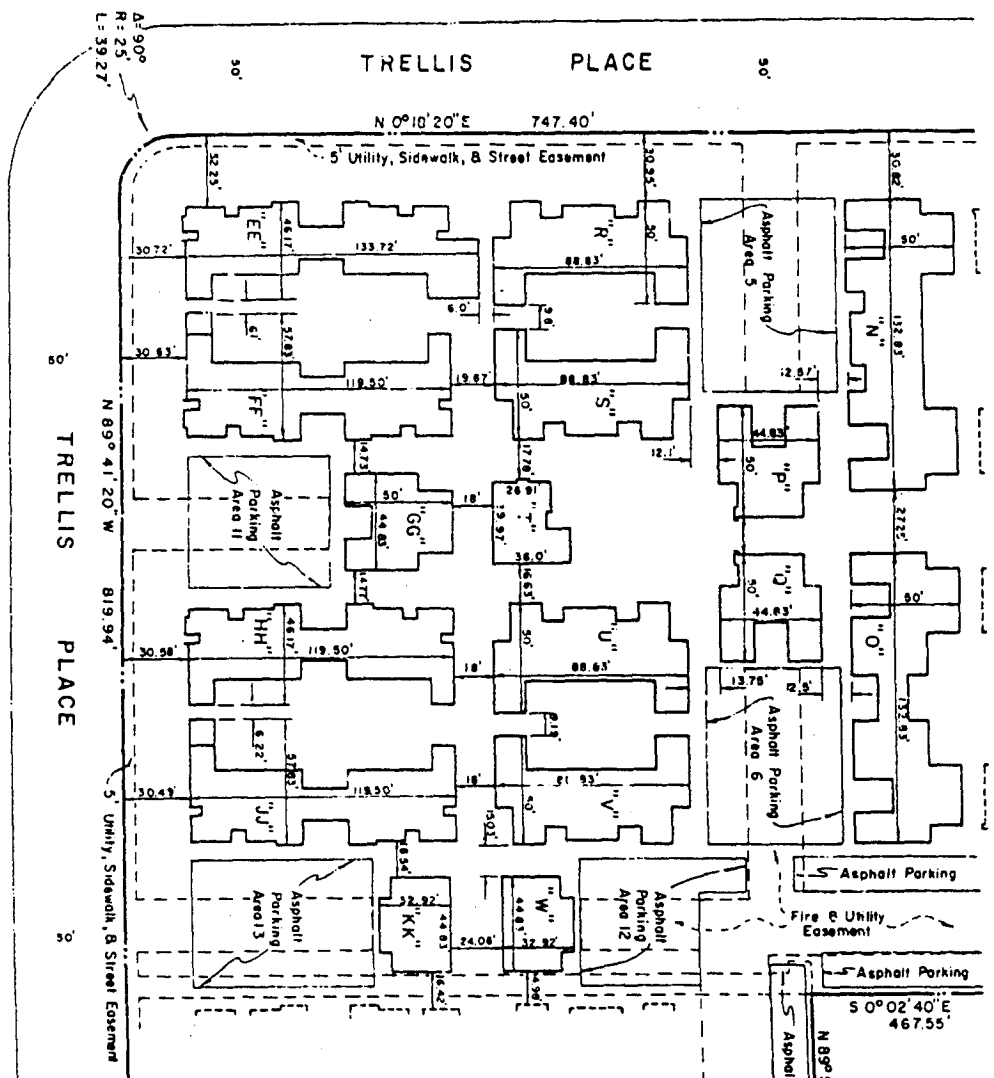


EXHIBIT "B-2"

RICHARDSON LIFESTYLE
CONDOMINIUM
 SUBDIVISION PLAN
 VILLAGE NORTH ADDITION
 CITY OF RICHARDSON DALLAS COUNTY, TEXAS
 BY
RAYMOND L. GOODSON JR. INC., ENGINEERS
 2909 LEMMON AVE. DALLAS, TEXAS
 JANUARY, 1972 SCALE: 1"=60'

VOL PAGE
 72201 2101

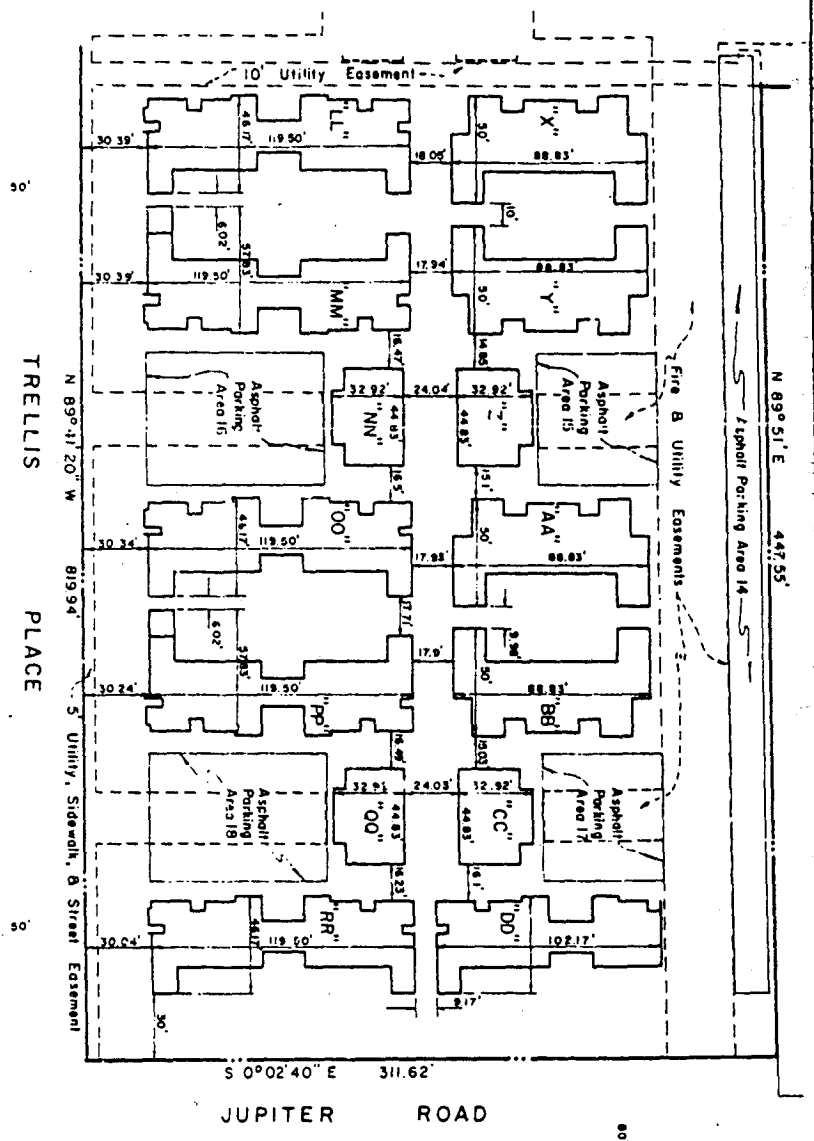
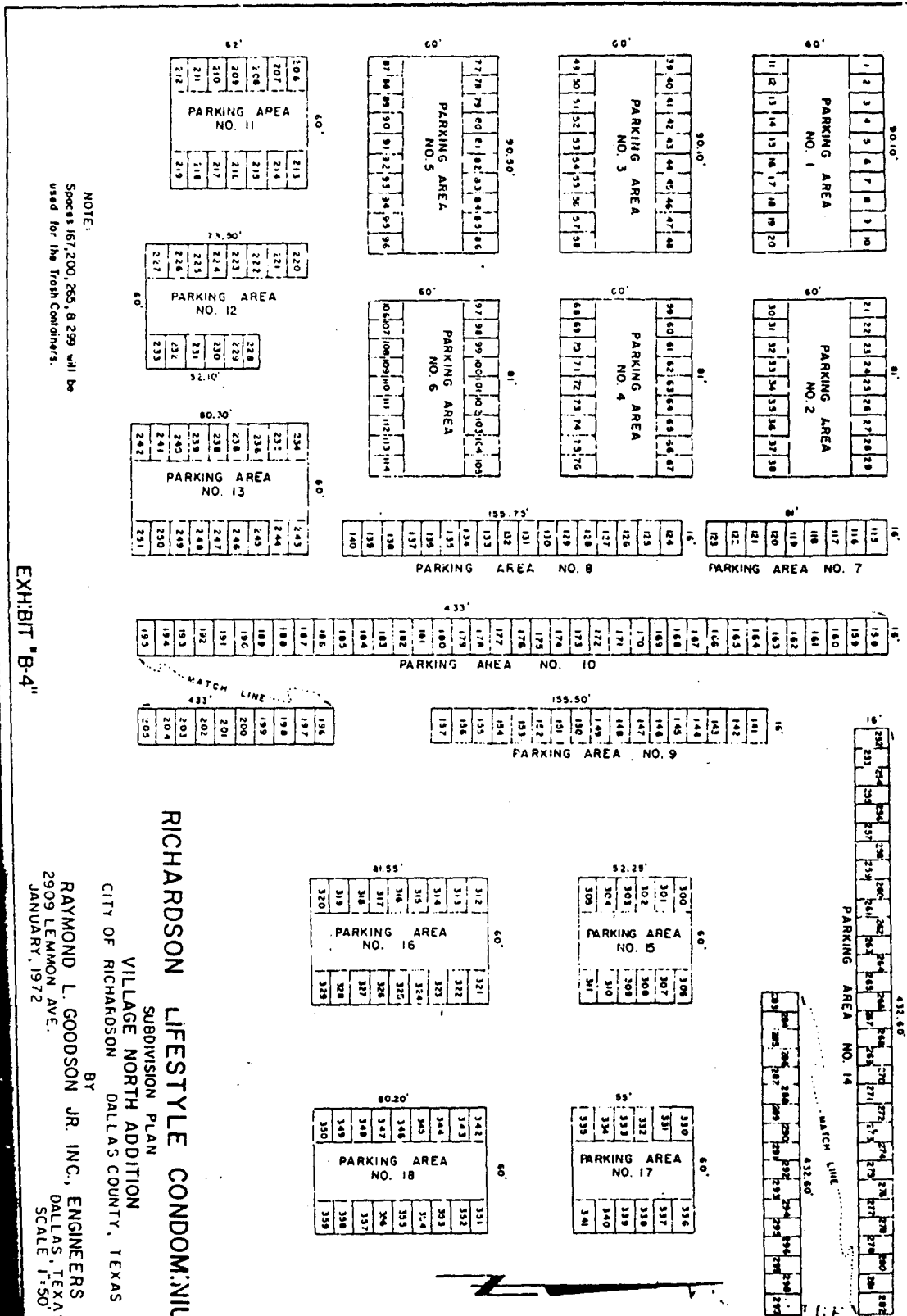


EXHIBIT "B-3"

**RICHARDSON LIFESTYLE
CONDOMINIUM**
SUBDIVISION PLAN
VILLAGE NORTH ADDITION
CITY OF RICHARDSON DALLAS COUNTY TEXAS
BY
RAYMOND L. GOODSON JR. INC., ENGINEERS
DALLAS, TEXAS
JANUARY, 1972
SCALE: 1"=60'

VILLAGE NORTH
72201 2102



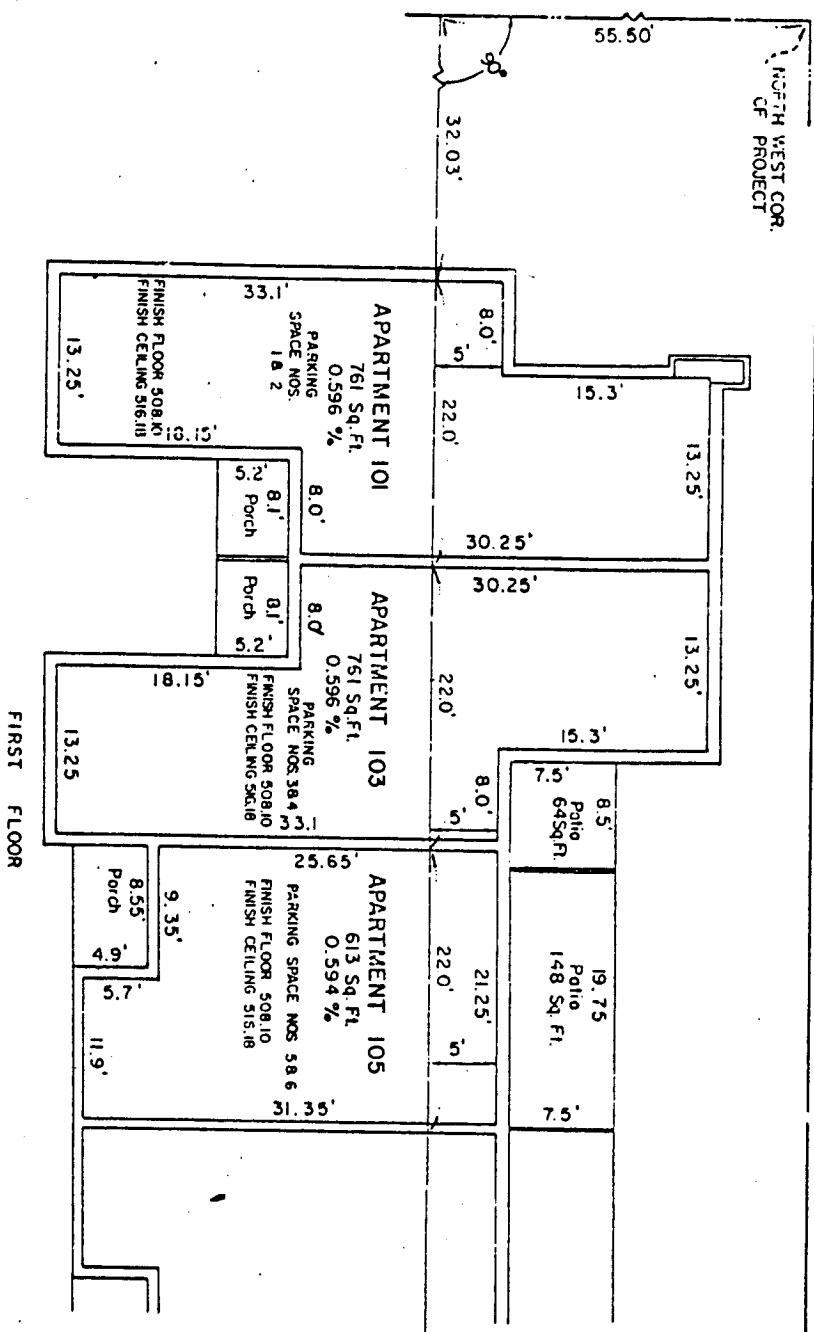
NOTE:
 Spaces 167, 200, 265, & 299 will be
 used for the Trash Containers.

EXHIBIT "B-4"

RICHARDSON LIFESTYLE CONDOMINIUM
 SUBDIVISION PLAN
 VILLAGE NORTH ADDITION
 CITY OF RICHARDSON DALLAS COUNTY, TEXAS
 BY
RAYMOND L. GOODSON JR. INC., ENGINEERS
 2909 LEMMON AVE.
 DALLAS, TEXAS
 SCALE 1"=50'
 JANUARY, 1972

72201 2103

NORTH WEST COR.
OF PROJECT



FIRST FLOOR

SURVEY PLAT
PART OF BUILDING "A" SHOWING THE LOCATION, SQUARE
FOOTAGE, AND DIMENSIONS OF THE APARTMENTS HEREON
DESIGNATED AS APARTMENT NOS. 101, 103, & 105
DIMENSIONS OF APARTMENTS ARE TO THE INSIDE WALLS.
DIMENSIONS OF PATIOS ARE TO EDGE OF CONCRETE.
ALL AREAS ON THIS FLOOR OUTSIDE OF THE APARTMENTS
ARE A PART OF THE COMMON ELEMENTS.

THE PORCHES SHOWN HEREON SHALL
BE PART OF LIMITED COMMON ELE-
MENTS BUT SHALL BE FOR THE EX-
CLUSIVE USE OF THE APTS. WHICH
THEY SERVE.

EXHIBIT "B-5"

RICHARDSON LIFESTYLE CONDOMINIUM
SUBDIVISION PLAN
VILLAGE NORTH ADDITION
CITY OF RICHARDSON DALLAS COUNTY, TEXAS
BY
RAYMOND L. GOODSON JR. INC., ENGINEERS
DALLAS, TEXAS
2909 LEMMON AVE.
JANUARY, 1972
SCALE 1"=10'

SURVEY PLAT NO. 1, A SHOWING THE LOCATION, SQUARE
 FOOTAGE AND DIMENSIONS OF THE APARTMENTS HEREIN
 DESIGNATED AS APARTMENTS 101, 102, 103 AND
 DIMENSIONS OF APARTMENTS ARE TO THE INSIDE WALLS.
 DIMENSIONS OF PATIOS ARE TO EDGE OF CONCRETE.
 ALL AREAS ON THIS FLOOR OUTSIDE OF THE APARTMENTS
 ARE A PART OF THE COMMON ELEMENTS.

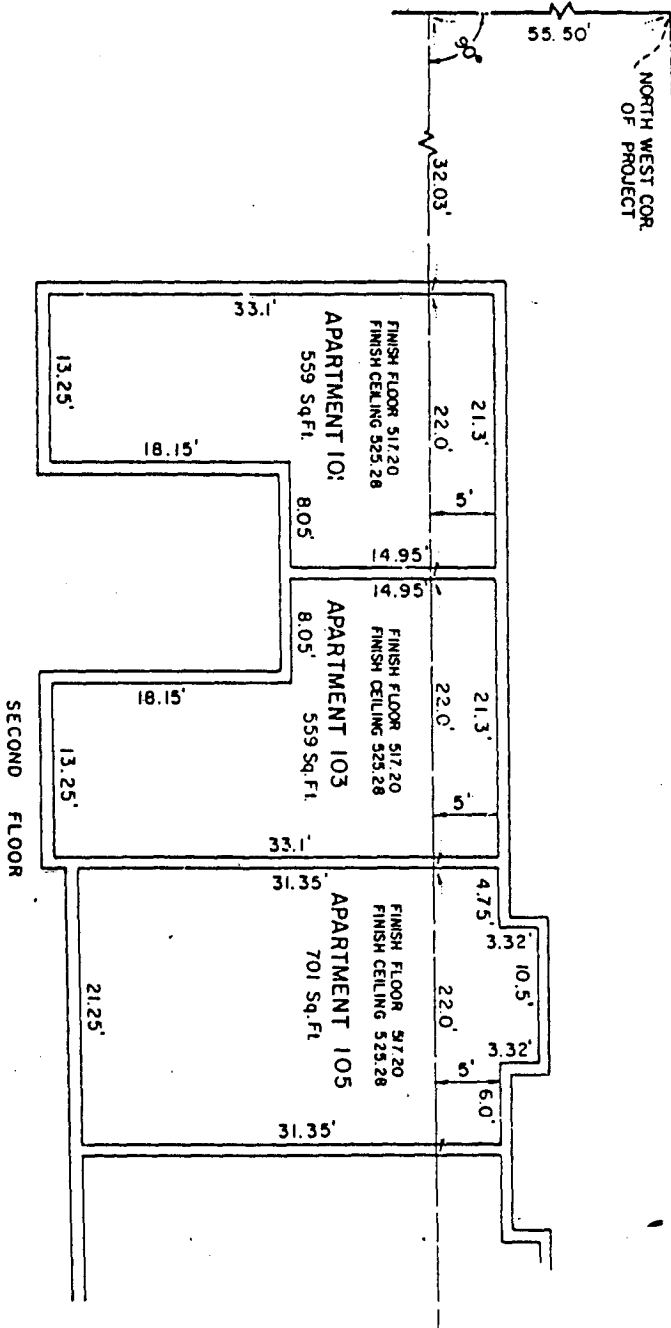


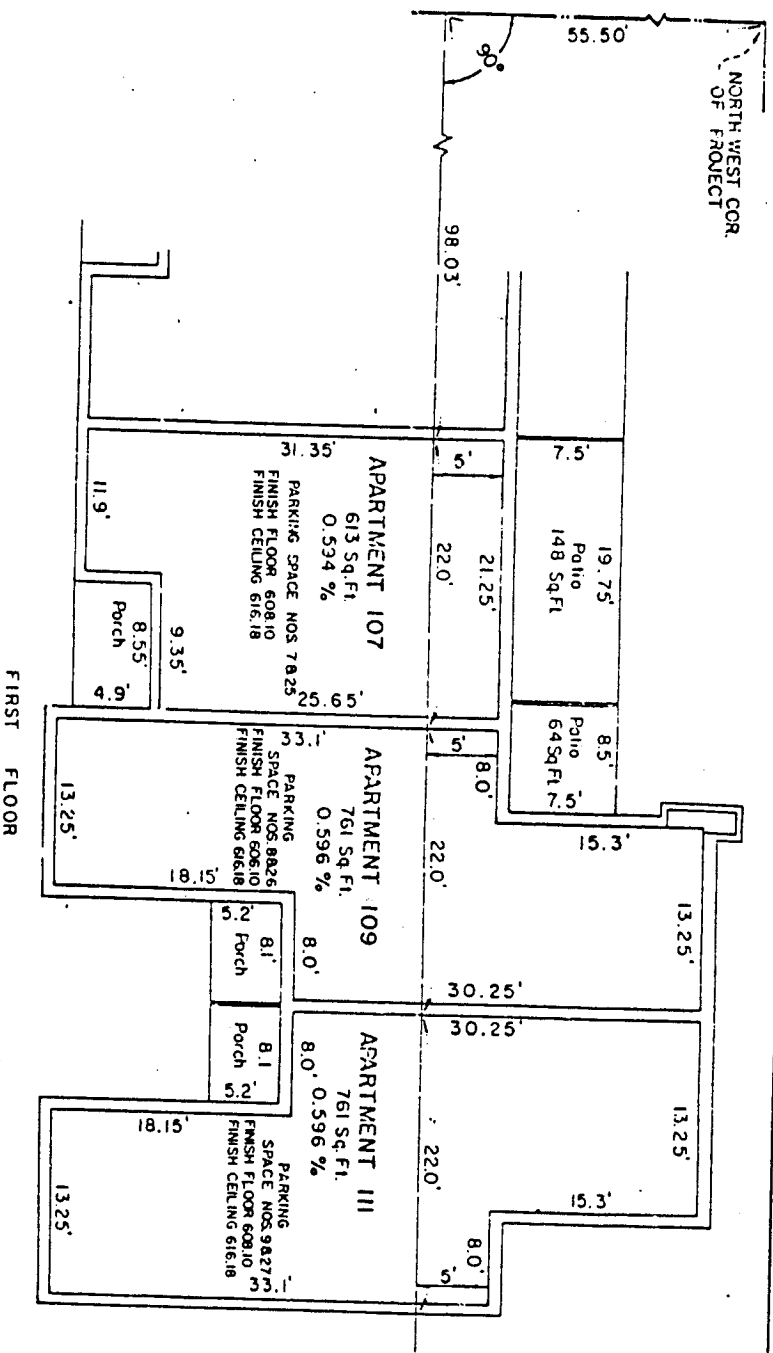
EXHIBIT "B-6"

RICHARDSON LIFESTYLE CONDOMINIUM

SUBDIVISION PLAN
 VILLAGE NORTH ADDITION
 CITY OF RICHARDSON, DALLAS COUNTY, TEXAS
 BY
 RAYMOND L. GOODSON JR., INC., ENGINEERS
 DALLAS, TEXAS
 SCALE 1"=10'
 JANUARY, 1972

72201 2105

NORTH WEST COR.
OF PROJECT



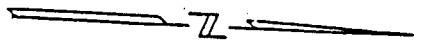
FIRST FLOOR

SURVEY PLAT PART OF BUILDING "A" SHOWING THE LOCATION, SQUARE FOOTAGE, AND DIMENSIONS OF THE APARTMENTS HEREOF DESIGNATED AS APARTMENT NOS. 107, 109, & 111 DIMENSIONS OF APARTMENTS ARE TO THE INSIDE WALLS, DIMENSIONS OF PATIOS ARE TO EDGE OF CONCRETE. ALL AREAS ON THIS FLOOR OUTSIDE OF THE APARTMENTS ARE A PART OF THE COMMON ELEMENTS.

THE PORCHES SHOWN HEREON SHALL BE PART OF LIMITED COMMON ELEMENTS BUT SHALL BE FOR THE EXCLUSIVE USE OF THE APTS. WHICH THEY SERVE.

EXHIBIT "B-7"

RICHARDSON LIFESTYLE CONDOMINIUM
SUBDIVISION PLAN
VILLAGE NORTH ADDITION
CITY OF RICHARDSON DALLAS COUNTY, TEXAS
BY
RAYMOND L. GOODSON JR. INC., ENGINEERS
2909 LEMMON AVE. DALLAS, TEXAS
JANUARY, 1972 SCALE 1"=10'



SURVEY PLAT
 PART OF BUILDING " A " SHOWING THE LOCATION, SQUARE
 FOOTAGE, AND DIMENSIONS OF THE APARTMENT'S HEREON
 DESIGNATED AS APARTMENT NOS. 107, 109, & 111
 DIMENSIONS OF APARTMENTS ARE TO THE INSIDE WALLS.
 DIMENSIONS OF PATIOS ARE TO EDGE OF CONCRETE.
 ALL AREAS ON THIS FLOOR OUTSIDE OF THE APARTMENTS
 ARE A PART OF THE COMMON ELEMENTS.

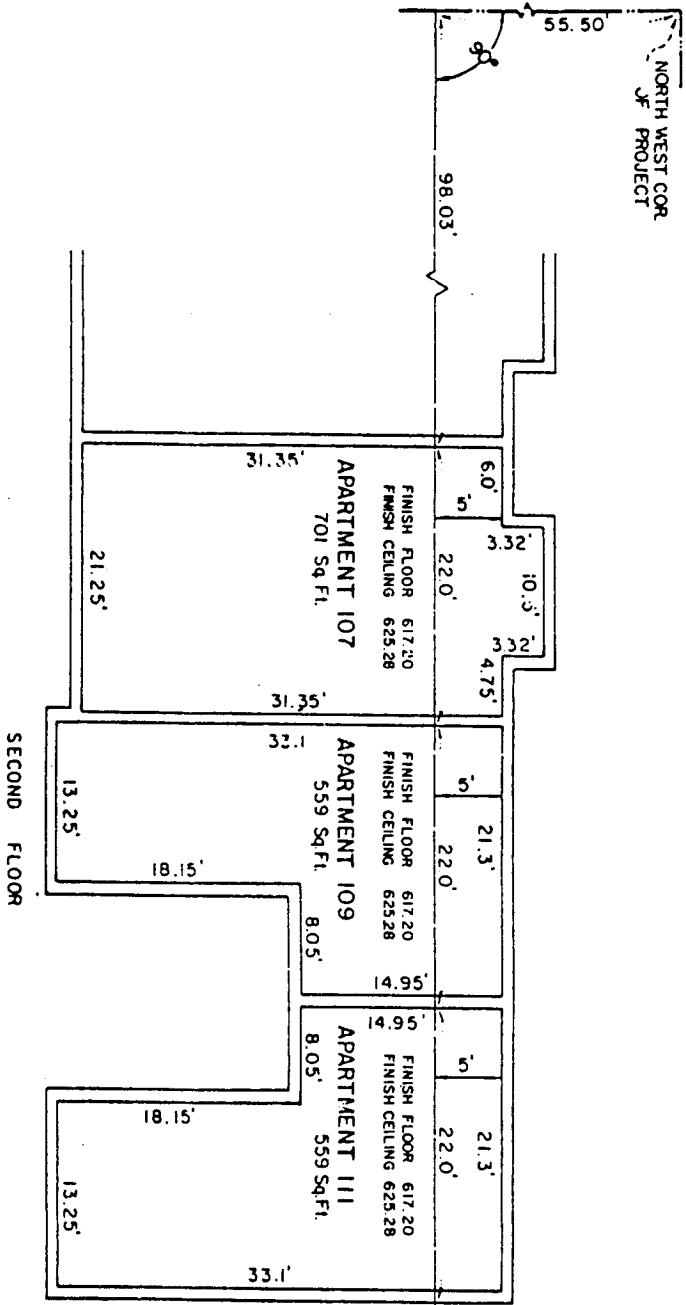
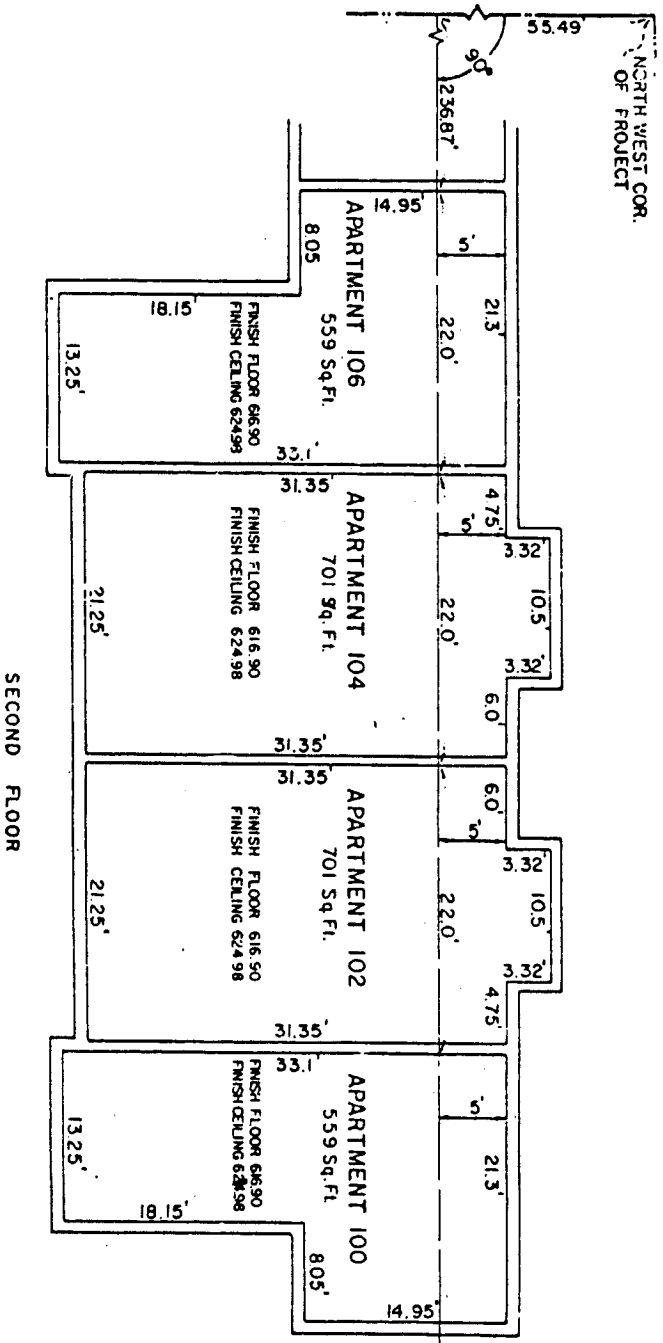


EXHIBIT "B-8"

RICHARDSON LIFESTYLE CONDOMINIUM
 SUBDIVISION PLAN
 VILLAGE NORTH ADDITION
 CITY OF RICHARDSON DALLAS COUNTY, TEXAS
 BY
 RAYMOND L. GOODSON JR., INC., ENGINEERS
 2909 LEMMON AVE.
 DALLAS, TEXAS
 JANUARY, 1972
 SCALE 1"=10'

SURVEY PLAT
 PART OF BUILDING "B" SHOWING THE LOCATION, SQUARE
 FOOTAGE, AND DIMENSIONS OF THE APARTMENTS HERON
 DESIGNATED AS APARTMENT NOS. 100, 102, 104, & 106
 DIMENSIONS OF APARTMENTS ARE TO THE INSIDE WALLS.
 DIMENSIONS OF PATIOS ARE TO EDGE OF CONCRETE.
 ALL AREAS ON THIS FLOOR OUTSIDE OF THE APARTMENTS
 ARE A PART OF THE COMMON ELEMENTS.



SECOND FLOOR

EXHIBIT "B-10"

RICHARDSON LIFESTYLE CONDOMINIUM
 SUBDIVISION PLAN
 VILLAGE NORTH ADDITION
 CITY OF RICHARDSON DALLAS COUNTY, TEXAS
 BY
 RAYMOND L. GOODSON JR. INC., ENGINEERS
 2909 LEMMON AVE.
 DALLAS, TEXAS
 JANUARY, 1972
 SCALE 1/8" = 1'-0"

VILLAGE
 72201 2109

SURVEY PLAT
 PART OF BUILDING "B" SHOWING THE LOCATION, SQUARE
 FOOTAGE, AND DIMENSIONS OF THE APARTMENTS HEREOF
 DESIGNATED AS APARTMENT NOS. 108, 110, & 112
 DIMENSIONS OF APARTMENTS ARE TO THE INSIDE WALLS.
 DIMENSIONS OF PATIOS ARE TO EDGE OF CONCRETE.
 ALL AREAS ON THIS FLOOR OUTSIDE OF THE APARTMENTS
 ARE A PART OF THE COMMON ELEMENTS.

THE PORCHES SHOWN HEREON SHALL
 BE A PART OF LIMITED COMMON ELE-
 MENTS BUT SHALL BE FOR THE EX-
 CLUSIVE USE OF THE APT. WHICH THEY
 SERVE.

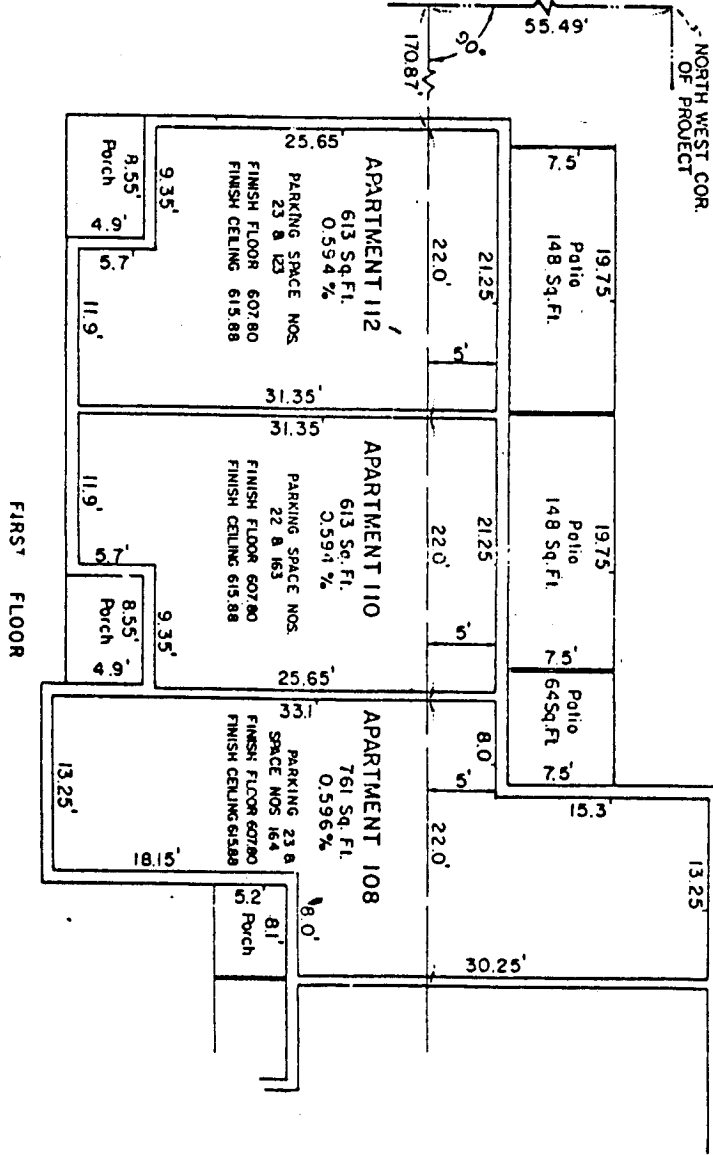
EXHIBIT "B-11"

RAYMOND L. GOODSON JR. INC., ENGINEERS
 2909 LEMMON AVE.
 DALLAS, TEXAS
 JANUARY, 1972

RICHARDSON LIFESTYLE CONDOMINIUM

SUBDIVISION PLAN
 VILLAGE NORTH ADDITION
 CITY OF RICHARDSON DALLAS COUNTY, TEXAS

BY
 RICHARDSON LIFESTYLE CONDOMINIUM



SURVEY PLAT
 PART OF BUILDING "B" SHOWING THE LOCATION, SQUARE
 FOOTAGE, AND DIMENSIONS OF THE APARTMENTS HEREOF
 DESIGNATED AS APARTMENT NOS. 108, 110, & 112
 DIMENSIONS OF APARTMENTS ARE TO THE INSIDE WALLS.
 DIMENSIONS OF PATIOS ARE TO EDGE OF CONCRETE.
 ALL AREAS ON THIS FLOOR OUTSIDE OF THE APARTMENTS
 ARE A PART OF THE COMMON ELEMENTS.

SECOND FLOOR

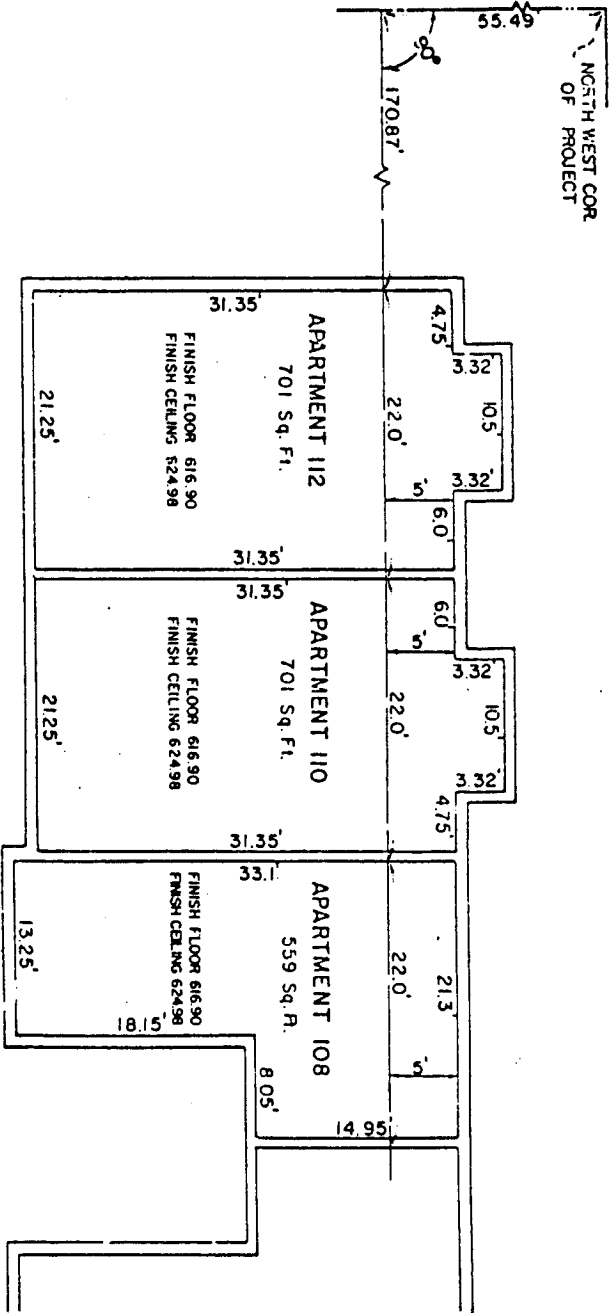
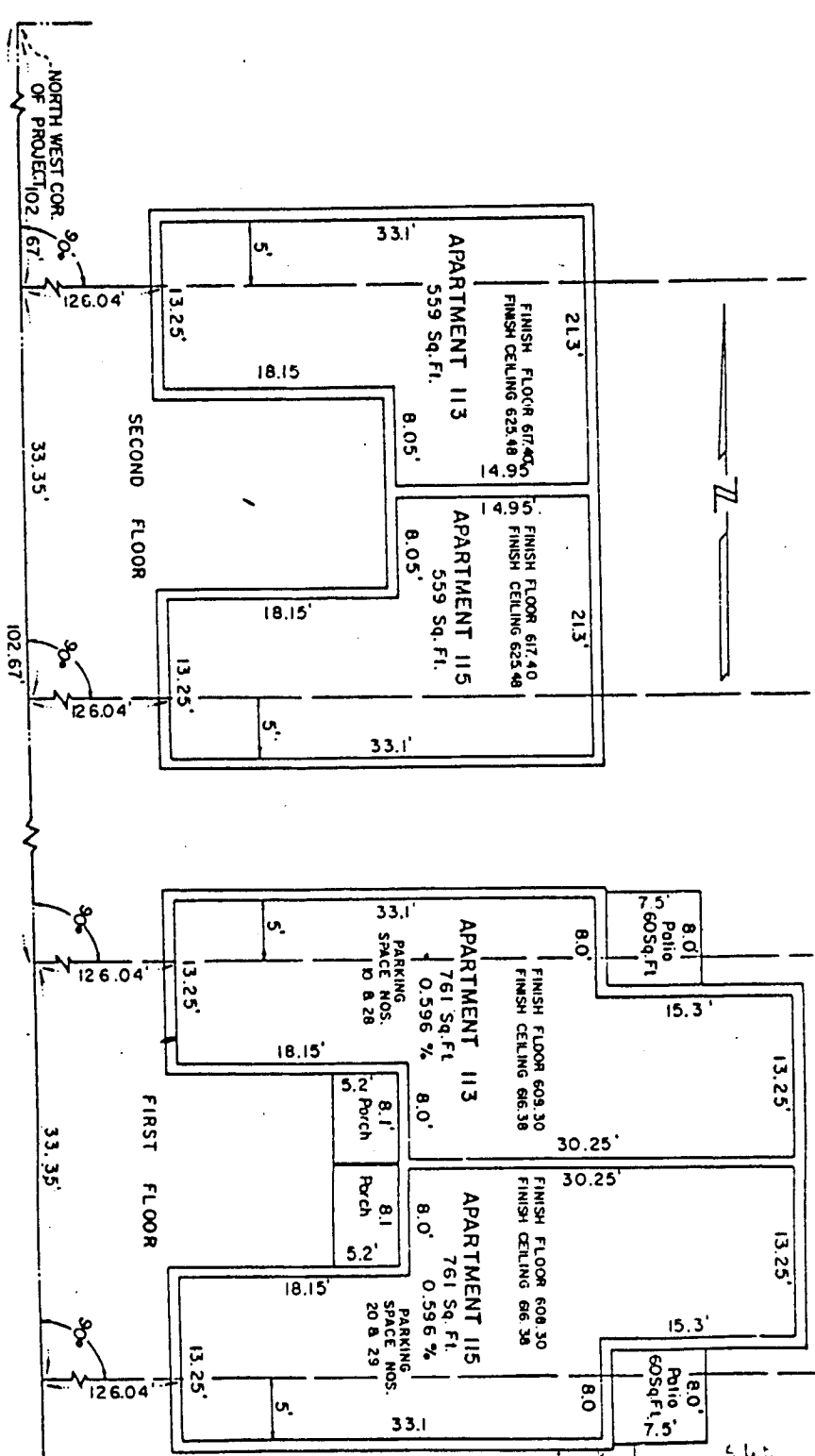


EXHIBIT "B-12"

RICHARDSON LIFESTYLE CONDOMINIUM
 SUBDIVISION PLAN
 VILLAGE NORTH ADDITION
 CITY OF RICHARDSON DALLAS COUNTY, TEXAS
 BY
RAYMOND L. GOODSON JR., INC., ENGINEERS
 2909 LEMMON AVE.
 DALLAS, TEXAS
 JANUARY, 1972
 SCALE 1"=10'

72201 2112



SURVEY PLAT
 BUILDING "C" SHOWING THE LOCATION, SQUARE FOOTAGE, AND DIMENSIONS OF THE APARTMENT'S HERON DESIGNATED AS APARTMENT NOS. 113, 115
 DIMENSIONS OF APARTMENTS ARE TO THE INSIDE WALLS.
 DIMENSIONS OF PATIOS ARE TO EDGE OF CONCRETE.
 ALL AREAS ON THIS FLOOR OUTSIDE OF THE APARTMENTS ARE A PART OF THE COMMON ELEMENTS.

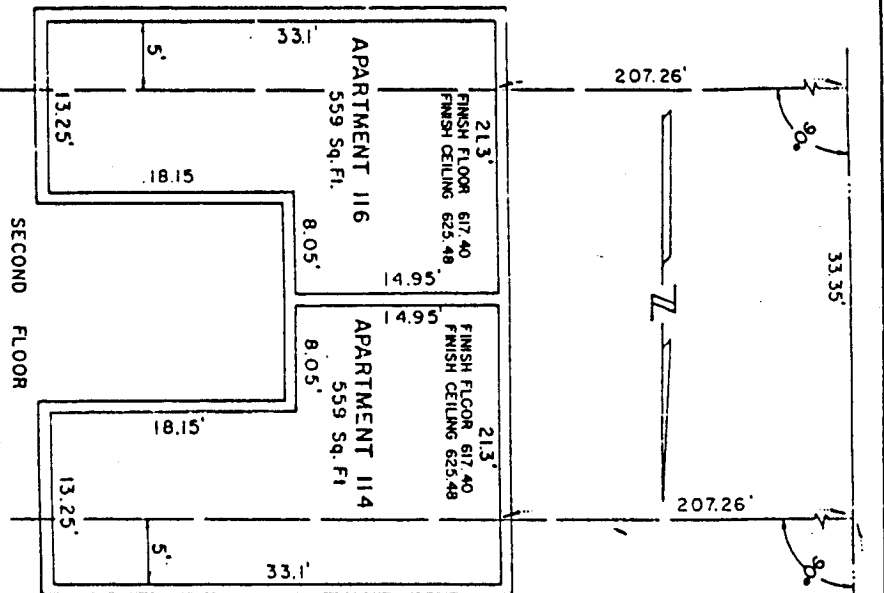
THE PORCHES SHOWN HEREON SHALL BE A PART OF LIMITED COMMON ELEMENTS BUT SHALL BE FOR THE EXCLUSIVE USE OF THE APT. WHICH THEY SERVE.

EXHIBIT "B-13"

RICHARDSSON LIFESTYLE CONDOMINIUM

SUBDIVISION PLAN
 VILLAGE NORTH ADDITION
 CITY OF RICHARDSON DALLAS COUNTY, TEXAS
 BY
 RAYMOND L. GOODSON JR. INC., ENGINEERS
 2909 LEMMON AVE.
 DALLAS, TEXAS
 SCALE 1"=10'
 JANUARY, 1972

SURVEY PLAT
 BUILDING "D" SHOWING THE LOCATION, SQUARE FOOTAGE, AND DIMENSIONS OF THE APARTMENTS HEREOF DESIGNATED AS APARTMENT NOS. 114, 116. DIMENSIONS OF APARTMENTS ARE TO THE INSIDE WALLS. DIMENSIONS OF PATIOS ARE TO EDGE OF CONCRETE. ALL AREAS ON THIS FLOOR OUTSIDE OF THE APARTMENTS ARE A PART OF THE COMMON ELEMENTS.



THE PORCHES SHOWN HEREON SHALL BE A PART OF LIMITED COMMON ELEMENTS BUT SHALL BE FOR THE EXCLUSIVE USE OF THE APT. WHICH THEY SERVE.

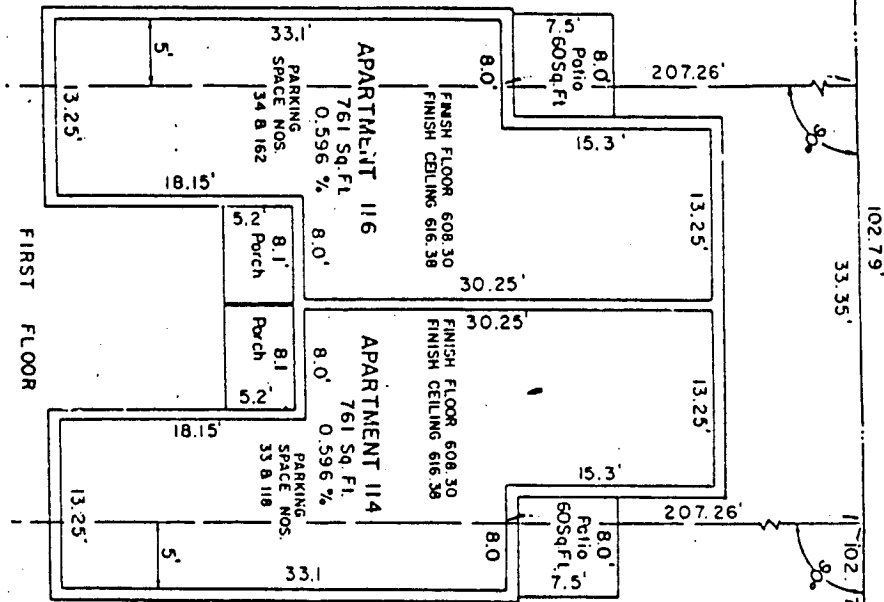


EXHIBIT "B-14"

RICHARDSON LIFESTYLE CONDOMINIUM

SUBDIVISION PLAN
 VILLAGE NORTH ADDITION
 CITY OF RICHARDSON DALLAS COUNTY, TEXAS
 BY
 RAYMOND L. GOODSON JR., INC., ENGINEERS
 2909 LEMMON AVE.
 DALLAS, TEXAS
 JANUARY, 1972
 SCALE 1"=10'

102.79' NORTH WEST COR. OF PROJECT

SURVEY PLAT
 PART OF BUILDING "E" SHOWING THE LOCATION, SQUARE
 FOOTAGE, AND DIMENSIONS OF THE APARTMENTS HEREOF
 DESIGNATED AS APARTMENT NOS. 117, 119, & 121
 DIMENSIONS OF APARTMENTS ARE TO THE INSIDE WALLS.
 DIMENSIONS OF PATIOS ARE TO EDGE OF CONCRETE.
 ALL AREAS ON THIS FLOOR OUTSIDE OF THE APARTMENTS
 ARE A PART OF THE COMMON ELEMENTS.

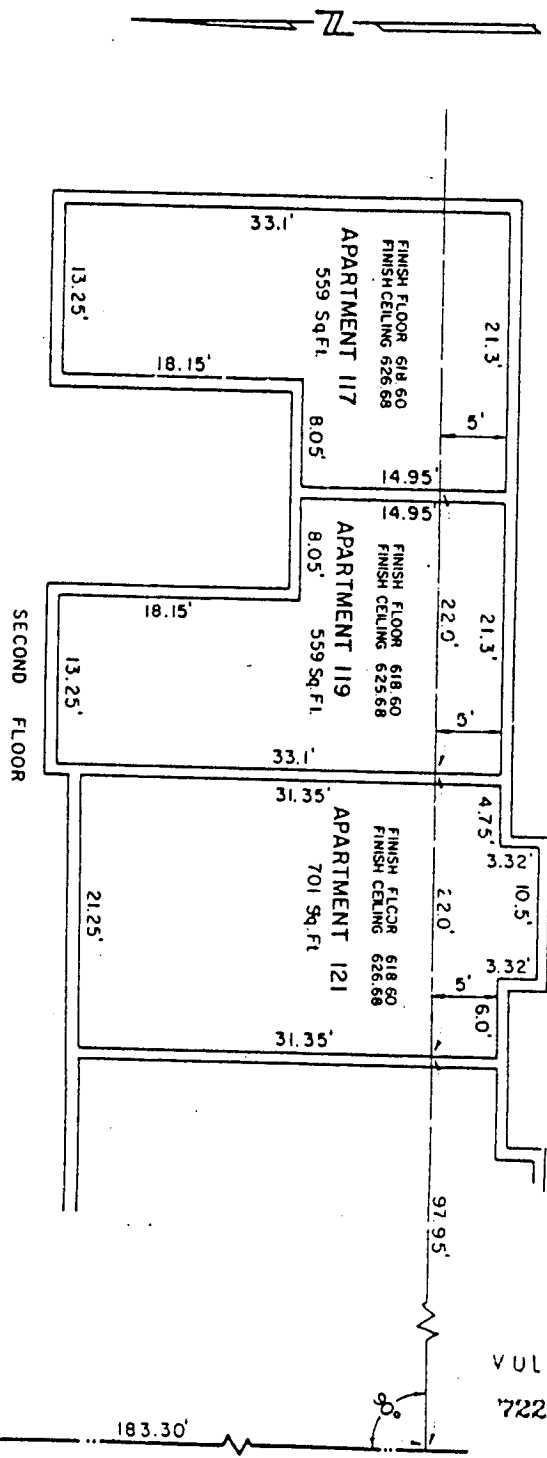


EXHIBIT "B-16"

RICHARDSON LIFESTYLE CONDOMINIUM
 SUBDIVISION PLAN
 VILLAGE NORTH ADDITION
 CITY OF RICHARDSON DALLAS COUNTY, TEXAS
 BY
RAYMOND L. GOODSON JR., INC., ENGINEERS
 2909 LEMON AVE.
 DALLAS, TEXAS
 JANUARY, 1972
 SCALE 1"=10'

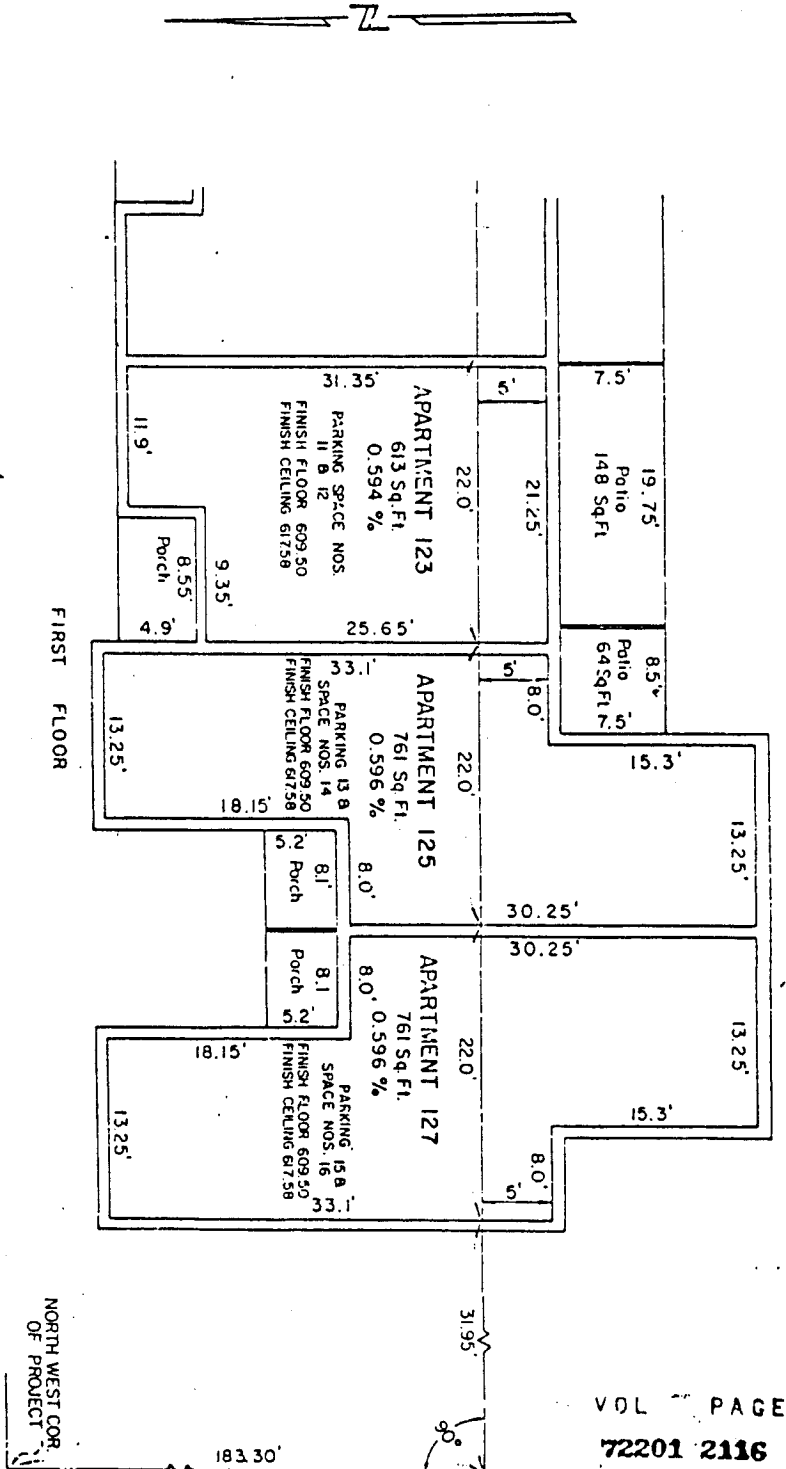
SURVEY PLAT
 PART OF BUILDING "E" SHOWING THE LOCATION, SQUARE
 FOOTAGE, AND DIMENSIONS OF THE APARTMENTS HEREON
 DESIGNATED AS APARTMENT NOS. 123, 125, & 127
 DIMENSIONS OF APARTMENTS ARE TO THE INSIDE WALLS.
 DIMENSIONS OF PATIOS ARE TO EDGE OF CONCRETE.
 ALL AREAS ON THIS FLOOR OUTSIDE OF THE APARTMENTS
 ARE A PART OF THE COMMON ELEMENTS.

THE PORCHES SHOWN HEREON SHALL
 BE A PART OF LIMITED COMMON ELE-
 MENTS BUT SHALL BE FOR THE EX-
 CLUSIVE USE OF THE APT. WHICH THEY
 SERVE.

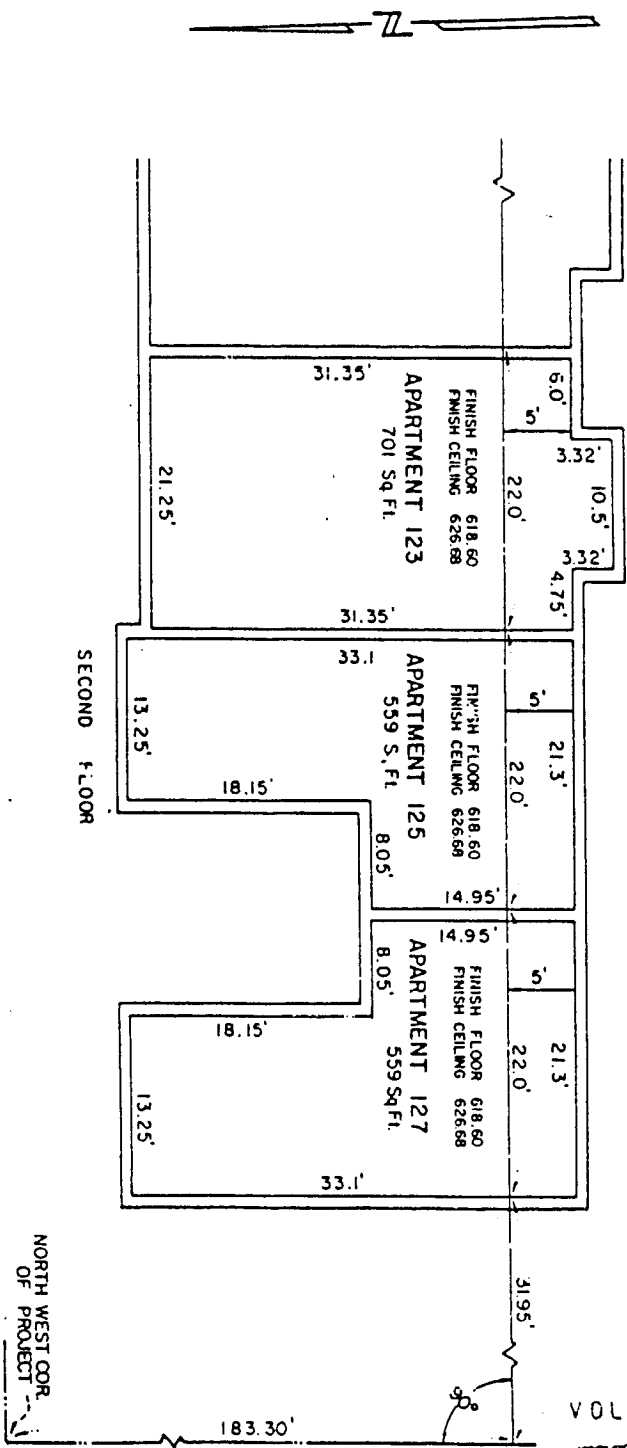
EXHIBIT "B-17"

RICHARDSON LIFESTYLE CONDOMINIUM

SUBDIVISION PLAN
 VILLAGE NORTH ADDITION
 CITY OF RICHARDSON DALLAS COUNTY, TEXAS
 BY
 RAYMOND L. GOODSON JR. INC., ENGINEERS
 2909 LEMMON AVE.
 DALLAS, TEXAS
 JANUARY, 1972
 SCALE 1"=10'



SURVEY PLAT
 PART OF BUILDING "E" SHOWING THE LOCATION, SQUARE
 FOOTAGE, AND DIMENSIONS OF THE APARTMENTS HEREOF
 DESIGNATED AS APARTMENT NOS. 123, 125, & 127
 DIMENSIONS OF APARTMENTS ARE TO THE INSIDE WALLS.
 DIMENSIONS OF PATIOS ARE TO EDGE OF CONCRETE.
 ALL AREAS ON THIS FLOOR OUTSIDE OF THE APARTMENTS
 ARE A PART OF THE COMMON ELEMENTS.



VOL PAGE
 72201 2117

RICHARDSON LIFESTYLE CONDOMINIUM
 SUBDIVISION PLAN
 VILLAGE NORTH ADDITION
 CITY OF RICHARDSON DALLAS COUNTY, TEXAS
 BY
 RAYMOND L. GOODSON JR. INC., ENGINEERS
 DALLAS, TEXAS
 2909 LEMMON AVE.
 JANUARY, 1972
 SCALE 1"=10'

EXHIBIT "B-18"

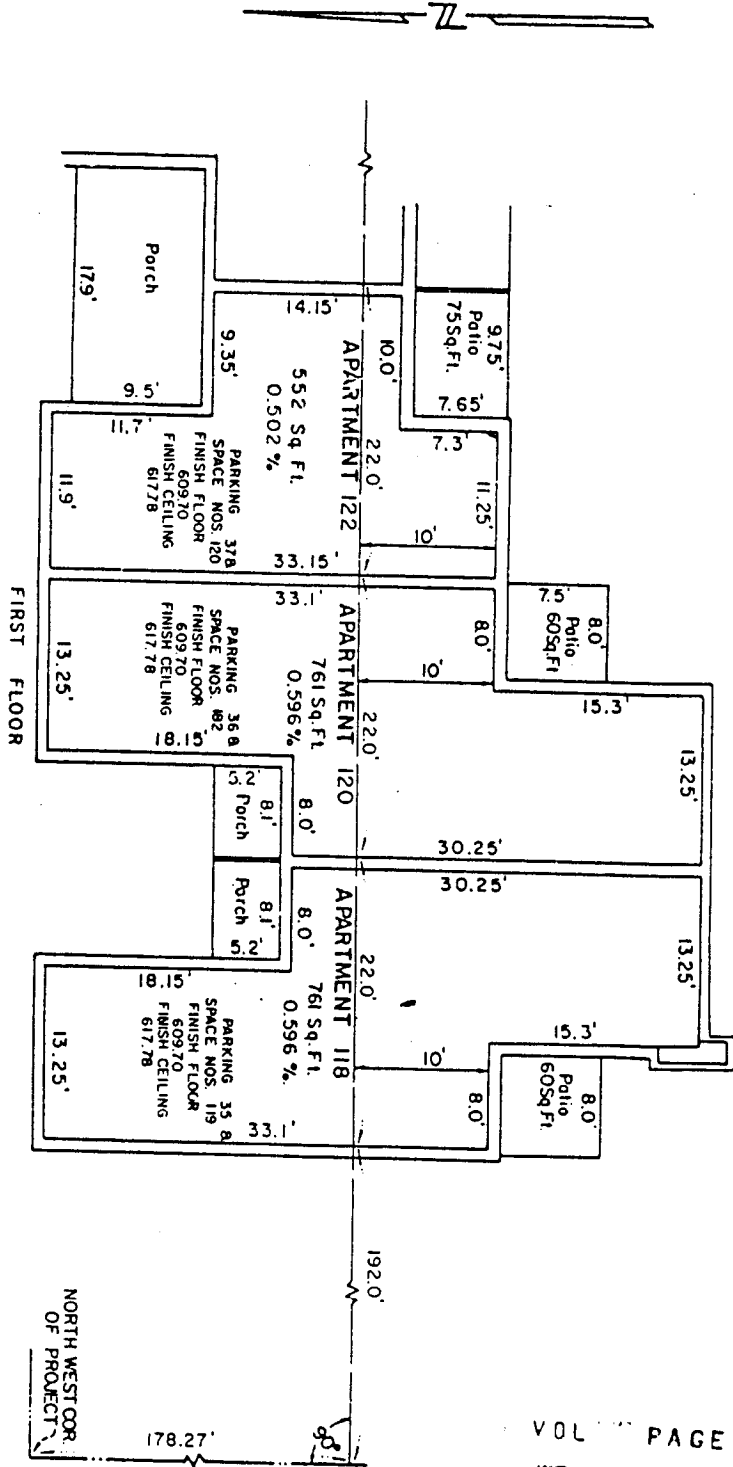
SURVEY PLAT PART OF BUILDING "F" SHOWING THE LOCATION, SQUARE FOOTAGE AND DIMENSIONS OF THE APARTMENTS HEREOF DESIGNATED AS APARTMENTS NOS. 118, 120, 122 DIMENSIONS OF APARTMENTS ARE TO THE INSIDE WALLS. DIMENSIONS OF PATIOS ARE TO EDGE OF CONCRETE. ALL AREAS ON THIS FLOOR OUTSIDE OF THE APARTMENTS ARE A PART OF THE COMMON ELEMENTS.

THE PORCHES SHOWN HEREON SHALL BE A PART OF LIMITED COMMON ELEMENTS BUT SHALL BE FOR THE EXCLUSIVE USE OF THE APT. WHICH THEY SERVE.

EXHIBIT "B-19"

RICHARDSON LIFESTYLE CONDOMINIUM

SUBDIVISION PLAN
 VILLAGE NORTH ADDITION
 CITY OF RICHARDSON DALLAS COUNTY, TEXAS
 BY
 RANDOND L. GOODSON JR., INC., ENGINEERS
 2909 LEMMON AVE. DALLAS, TEXAS
 JANUARY, 1972
 SCALE "1"=10'



SURVEY PLAT
 PART OF BUILDING "F" SHOWING THE LOCATION, SQUARE
 FOOTAGE, AND DIMENSIONS OF THE APARTMENTS HERON
 DESIGNATED AS APARTMENT NOS. 118, 120, 122
 DIMENSIONS OF APARTMENTS ARE TO THE INSIDE WALLS.
 DIMENSIONS OF PATIOS ARE TO EDGE OF CONCRETE.
 ALL AREAS ON THIS FLOOR OUTSIDE OF THE APARTMENTS
 ARE A PART OF THE COMMON ELEMENTS.

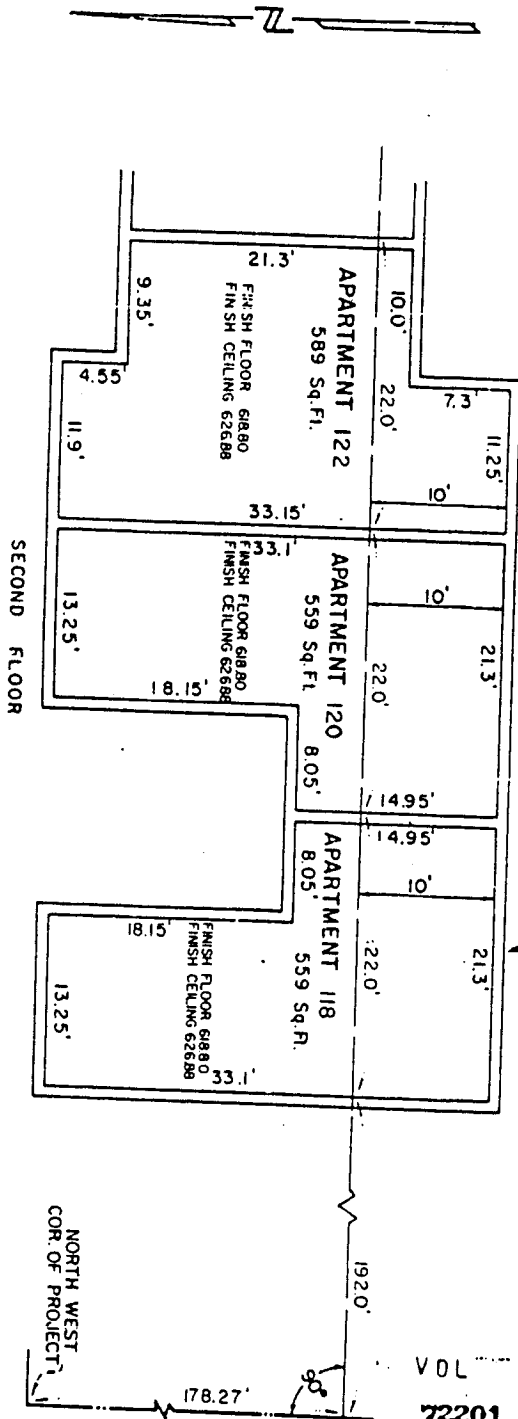


EXHIBIT "B-20"

RICHARDSON LIFESTYLE CONDOMINIUM
 SUBDIVISION PLAN
 VILLAGE NORTH ADDITION
 CITY OF RICHARDSON DALLAS COUNTY, TEXAS
 BY
 RAYMOND L. GOODSON JR. INC., ENGINEERS
 2909 LEMMON AVE. DALLAS, TEXAS
 JANUARY, 1972 SCALE 1"=10'

SURVEY PLAT PART OF BUILDING "F" SHOWING THE LOCATION, SQUARE FOOTAGE, AND DIMENSIONS OF THE APARTMENTS HEREOF DESIGNATED AS APARTMENT NOS. 124, 126, 128 DIMENSIONS OF APARTMENTS ARE TO THE INSIDE WALLS. DIMENSIONS OF PATIOS ARE TO EDGE OF CONCRETE. ALL AREAS ON THIS FLOOR OUTSIDE OF THE APARTMENTS ARE A PART OF THE COMMON ELEMENTS.

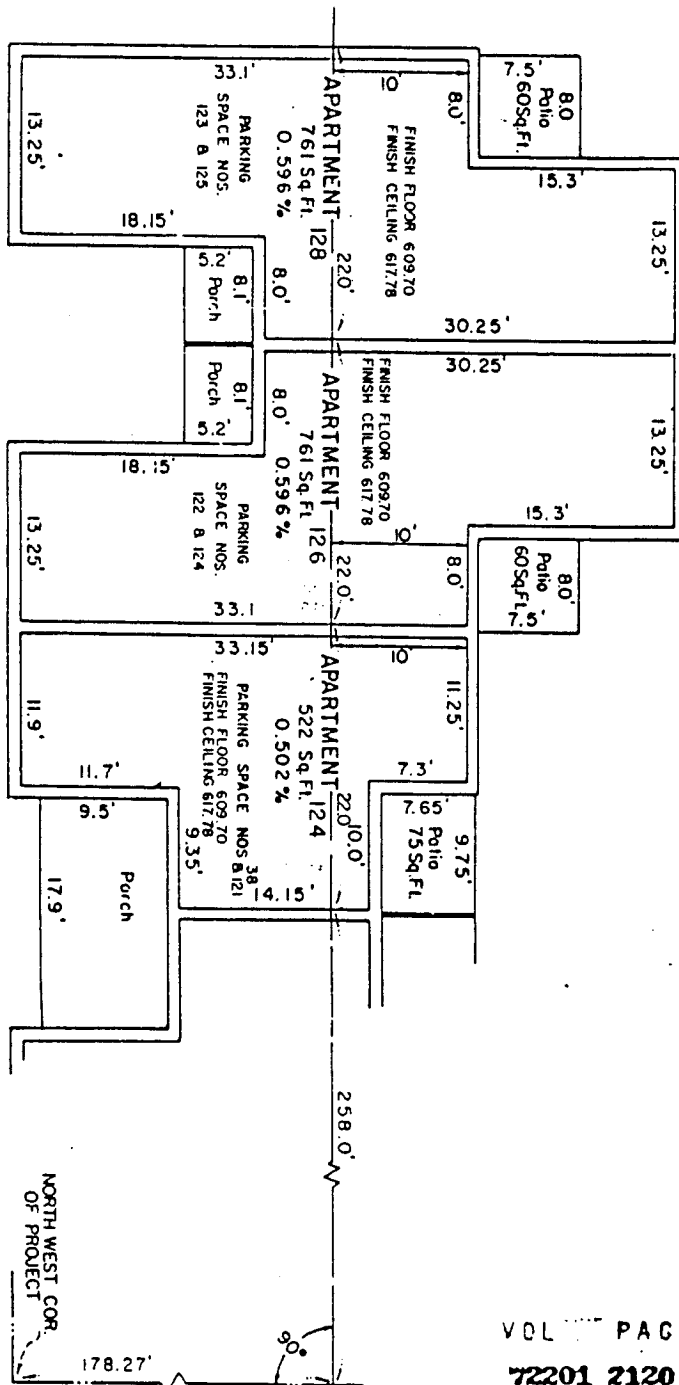
THE PORCHES SHOWN HEREON SHALL BE A PART OF LIMITED COMMON ELEMENTS BUT SHALL BE FOR THE EXCLUSIVE USE OF THE APT. WHICH THEY SERVE.

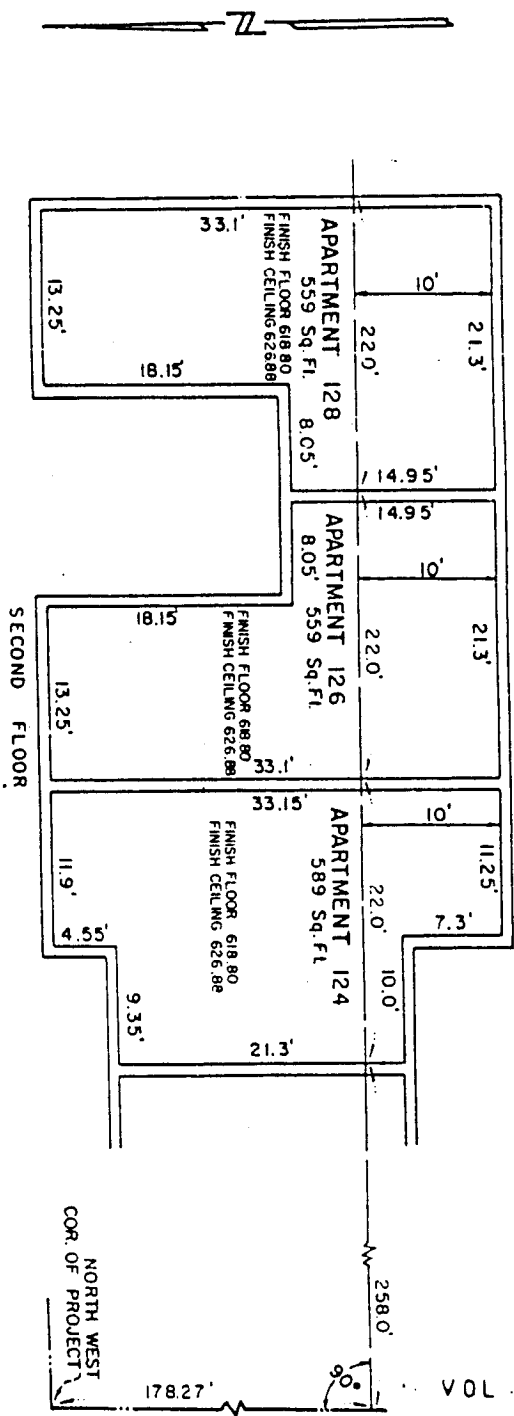
EXHIBIT "B-21"

RICHARDSON LIFESTYLE CONDOMINIUM

SUBDIVISION PLAN
 VILLAGE NORTH ADDITION
 CITY OF RICHARDSON DALLAS COUNTY, TEXAS
 BY
 RAYMOND L. GOODSON JR., INC., ENGINEERS
 2909 LEMMON AVE. DALLAS, TEXAS
 JANUARY, 1972 SCALE 1"=10'

FIRST FLOOR



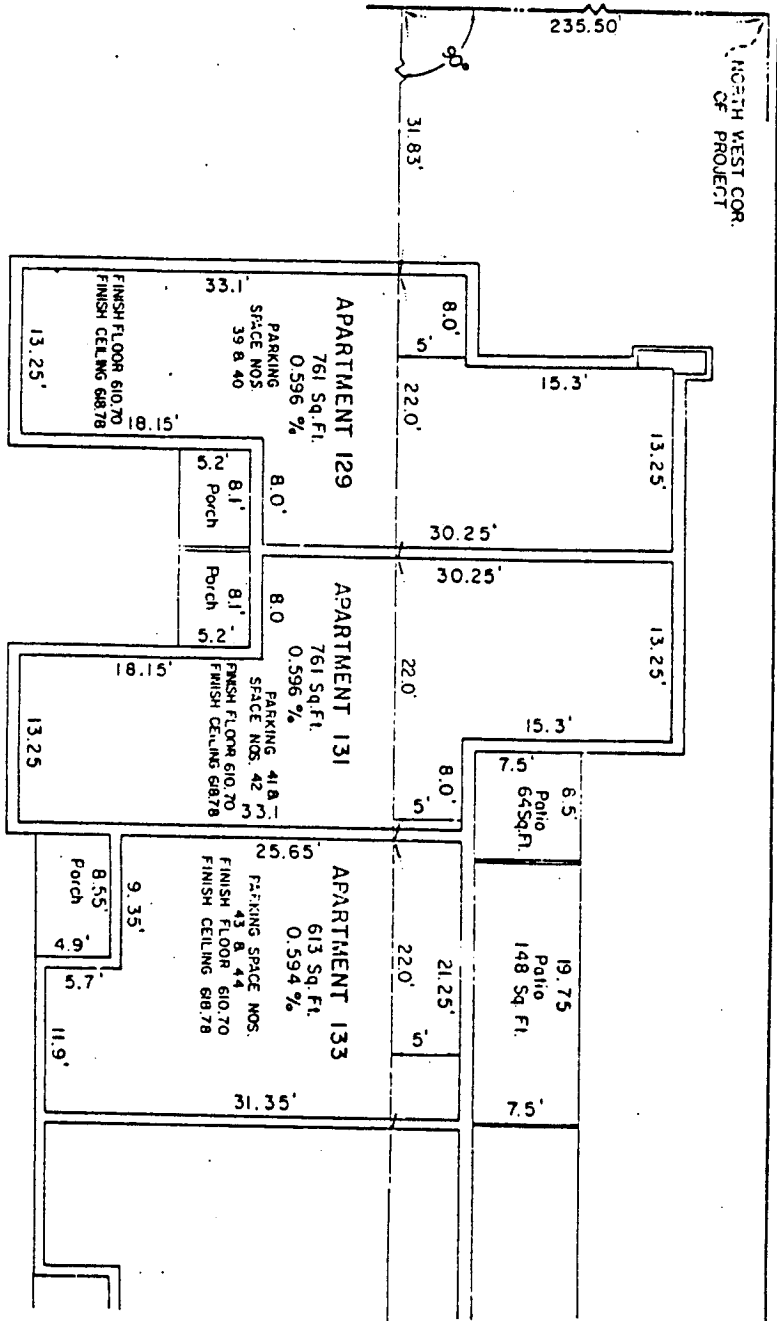


SURVEY PLAT PART OF BUILDING "F" SHOWING THE LOCATION, SQUARE FOOTAGE, AND DIMENSIONS OF THE APARTMENTS HEREOF DESIGNATED AS APARTMENT NOS. 124, 126, 128. DIMENSIONS OF APARTMENTS ARE TO THE INSIDE WALLS. DIMENSIONS OF PATIOS ARE TO EDGE OF CONCRETE. ALL AREAS ON THIS FLOOR OUTSIDE OF THE APARTMENTS ARE A PART OF THE COMMON ELEMENTS.

EXHIBIT "B-22"

RICHARDSON LIFESTYLE CONDOMINIUM
SUBDIVISION PLAN
VILLAGE NORTH ADDITION
CITY OF RICHARDSON DALLAS COUNTY, TEXAS
BY
RAYMOND L. GOODSON JR., INC., ENGINEERS
DALLAS, TEXAS
2909 LEMON AVE.
JANUARY, 1972
SCALE 1"=10'

NORTH WEST COR.
OF PROJECT



FIRST FLOOR

SURVEY PLAT
PART OF BUILDING "G" SHOWING THE LOCATION, SQUARE FOOTAGE, AND DIMENSIONS OF THE APARTMENTS HEREOF DESIGNATED AS APARTMENTS NOS. 129, 131, & 133. DIMENSIONS OF APARTMENTS ARE TO THE INSIDE WALLS. DIMENSIONS OF PATIOS ARE TO EDGE OF CONCRETE. ALL AREAS ON THIS FLOOR OUTSIDE OF THE APARTMENTS ARE A PART OF THE COMMON ELEMENTS.

THE PORCHES SHOWN HEREON SHALL BE A PART OF LIMITED COMMON ELEMENTS BUT SHALL BE FOR THE EXCLUSIVE USE OF THE APT. WHICH THEY SERVE.

EXHIBIT "B-23"

RICHARDSON LIFESTYLE CONDOMINIUM
SUBDIVISION PLAN
VILLAGE NORTH ADDITION
CITY OF RICHARDSON DALLAS COUNTY, TEXAS
BY,
RAYMOND L. GOODSON JR., INC., ENGINEERS
2909 LEMON AVE.
DALLAS, TEXAS
JANUARY, 1972
SCALE 1"=10'